

DOOKIE AGRICULTURAL & PASTORAL SOCIETY Inc.

138th ANNUAL SHOW



Saturday 4th November 2023

President

Mr Peter Shields

Vice President

Mrs Jenny Shields

Treasurer

Mr Tim Young

All Show Entries

Post Entry Forms to:
PO Box 18, Dookie 3646

Please direct all

other enquiries to...

Show Secretary

Suzie Hall

PO Box 18, Dookie 3646

Tel 0428 765 893

E: dookieshowociety@gmail.com

SHEDS

RURAL, INDUSTRIAL, COMMERCIAL & GARAGES



ROOF ONLY HAYSHEDS

(All Prices Ex. Yard, inc. GST)

18m x 9m x 4.0m(h)

24m x 12m x 4.5m(h)

30m x 15m x 5.25m(h)

**CALL
FOR
QUOTE**

FARM SHEDS - OPEN FRONT

(All Prices Ex. Yard, inc. GST)

12m x 9m x 3.6m(h)

18m x 12m x 4.2m(h)

24m x 15m x 4.8m(h)

30m x 18m x 6.0m(h)

**CALL
FOR
QUOTE**

CUSTOM MADE

TELFORDS
BUILDING SYSTEMS

www.telfords.com.au

VICTORIA

Shepparton (Head Office)

Ph: (03) 5821 4399

TIME SCHEDULE FOR ARENA EVENTS

9.00 a.m. Onwards

Horses Rings 1, 2 & 3

9.30 a.m. Ring 4 (Pony Club)

11.00 a.m. Free Children's Activities

12.00 p.m. Sheds open for viewing of exhibits

12.30 p.m. Dog Jumping

2.00 p.m. Onwards

Judging of Tiny Tots,

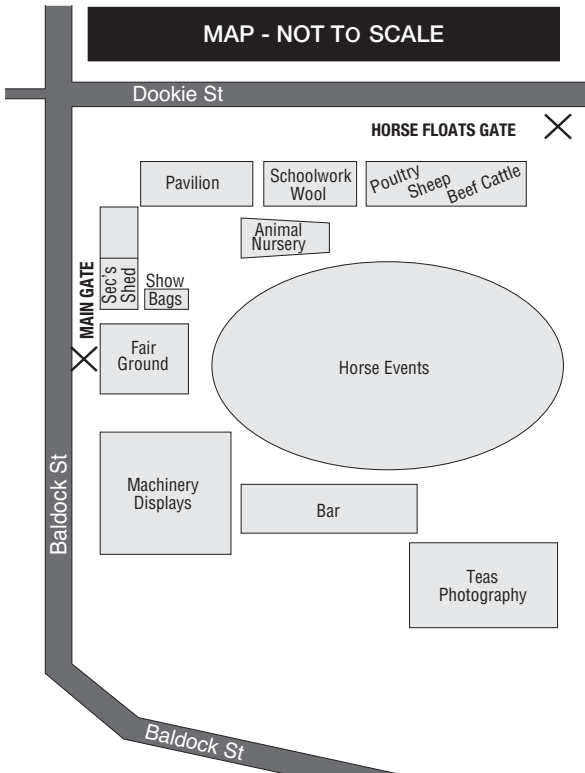
Show Girls/Boys

(near animal nursery)

Citizen Dookie Competition

3.00 p.m. Games on the Oval

to 4.00 p.m. Children's and Adult Fun



D. & E. FELDTMANN BUILDERS

*Professional service
and workmanship
catering to your
requirements*



54 Queen Street,
Dookie
0407 570 531

(03) 5828 6225

- *New Homes*
- *Renovations & Extensions*
- *Commercial & Industrial*
- *Bobcat Hire*

78 Mary Street, Dookie, 3646

☎ **Rod: (03) 5828 6274**

Mobile: 0412 579 070

DOW **Mobile Engineering**

- *CNC Plasma Cutting*
- *Specialist Welding* • *Stainless Steel Pipework*
- *D.L.I. Welding – Pipe, Plate, Oxy* • *General Engineering*





Brett Collins Refrigeration & AIR CONDITIONING

ABN 62 837 223 842 ACN 111 215 644 RTA: AU06108 REC 19508

Specialising in: Commercial Refrigeration & Air Conditioning

BRETT COLLINS

5A Wheeler Street
Shepparton 3630

Ph: 03 5821 8787

Fax: 03 5831 7002

admin@brettcollinsrefrigeration.com.au

Mobile: 0419 680 777



DOOKIE MOTORS

**For all your Mechanical Servicing,
Air Conditioning & Repairs to Cars,
Trucks and Farm Machinery**



84 Mary Street, Dookie 3646
Email: dookiemotors@gmail.com

Phone: 5828 6215

Fax: 5828 6555

Authorised Distributor of Jetstream Spare Parts



MAWSONS[®]

Concrete & Quarries

For

- Quality Materials
- Reliable, Friendly Service

Phone

1800 423 456

Shepparton Concrete: 5821 8826

Yabba Quarries: 5828 5275

DOOKIE AGRICULTURAL AND PASTORAL SOCIETY INC.

Member's Tickets \$25.00

Must be purchased prior to Show Day or full gate prices will apply.

TICKETS ARE AVAILABLE FROM THE SECRETARY:

P.O. BOX 18, DOOKIE, 3646

or from the Secretary's Office between the hours stated below.

Privileges of Membership ARE...

Free admittance to showground for Member, Partner and Member's children up to 16 years. Also Free Entries in all classes except Wine and Photography Open Category.

ADMISSION NON-MEMBERS

ADULTS \$10.00 – CHILDREN (6-16) \$5.00 – PENSIONERS \$5.00

ENTRIES

Completed entry forms accompanied by the correct entry fees **must be received by Wednesday 25th October by 5.00 pm** (unless otherwise stated).

Entry forms may be left at Dookie Show Secretary's Office

at 20-50 Dookie Street, Dookie between Wednesday 18th October and Wednesday 25th October between the hours of 9.00am and 12.00pm & 3.00pm and 6.00pm each day. If the office is unattended, please put your entries in an envelope and put them through the mail slot at the old Bendigo Bank in the main street of Dookie.

Or posted to PO Box 18, DOOKIE, 3646.

When entries are processed, section tickets will be provided. These are to be attached to all exhibits prior to bringing them to the showgrounds.

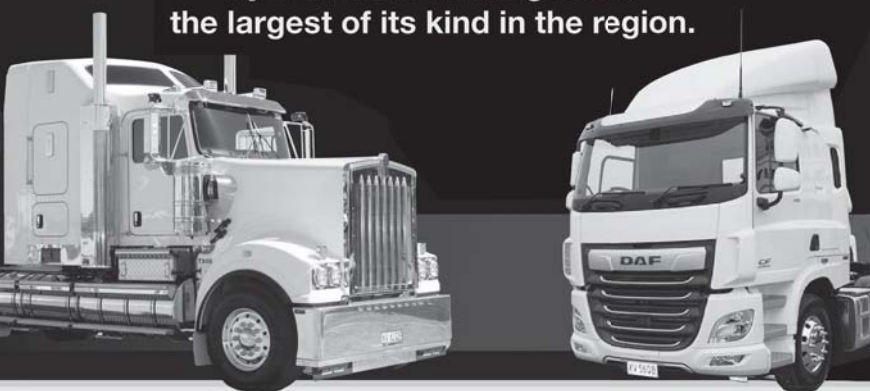
STAGING TIMES

Classes U & V are judged on the Friday before Show Day and all exhibits in these classes must be delivered to the George Batey Pavilion on Thursday prior to Show Day between 4.00pm - 6.00pm.

Exhibits in classes M N O P Q R & S are to be brought to the **George Batey Pavilion between 5pm - 7pm on Friday evening** before the Show or between **7.00am - 8.30am on Show Day, unless otherwise stated.** All exhibits must be ready for judging to start by 8.45am.

New truck and spare parts specialists

With more than 35 years in the industry,
Graham Thomson Motors continue to provide
market leading brands, backed up
by an award-winning team,
the largest of its kind in the region.



Proud supporters of the Dookie Show



Cnr Doyles & New Dookie Roads, Shepparton Ph: (03) 5821 3977 www.gtm.com.au

INSURANCE & RESPONSIBILITIES

The Society will not be responsible for any accidents that may be caused through or by any exhibits, and it shall be a condition of entry that each exhibitor shall hold the Society harmless and indemnified against any legal proceedings arising from any such accidents.

The Society will not under any circumstances hold itself liable for any accidents on the grounds or premises.

The Society will not under any circumstances hold itself responsible for any damage to, or misdelivery of any exhibits.

Dogs must be tied up inside floats or trucks or vehicles or caravans.

Incorporated in the Entry Fee for Livestock is a charge to cover the cost of insuring all Exhibitors. Names and addresses must be recorded when purchasing Entry Tickets for Livestock.

It is a condition of entry that all competitors enter completely at their own risk.

CLAIMING OF PRIZE MONEY AND TROPHIES

All prize money and trophies are to be collected from the Secretary's Office from 4.30pm onwards. Please present prize card when collecting prizes.

All prizes not collected on Show Day will be forfeited.

ROOM AVAILABLE IN THE DOOKIE COMMUNITY
CENTRE FOR NURSING MOTHERS

Edge Machining

Baldock Street

Dookie, Vic, 3646

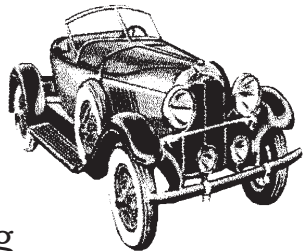
Ph/Fax (03) 5828 6250

Steve & Kara Fleming

Suppliers of Egge Machine Co Parts

Vintage Engine Rebuilding

Whitemetalling & General Engineering



MASTER TINY TOT - BOYS 3 TO 5 YEARS

To live within 50 kilometre radius of showgrounds.

Winner to receive Sash and Gift donated by **the family of Mrs Thorp.**

MISS TINY TOT - GIRLS 3 TO 5 YEARS

To live within 50 kilometre radius of showgrounds.

Winner to receive Sash and Gift.

MASTER JUNIOR SHOW BOY - 6 TO 9 YEARS

To live within 50 kilometre radius of showgrounds.

Winner to receive Sash and Gift.

MISS JUNIOR SHOW GIRL - 6 TO 9 YEARS

To live within 50 kilometre radius of showgrounds.

Winner to receive Sash and Gift donated by **Mrs Lorna Ford.**

MISS TWEEN SHOW GIRL - 10 TO 12 YEARS

To live within 50 kilometre radius of showgrounds.

Winner to receive Sash and Gift donated by **Sarah & Yvonne Baker.**

MISS TEEN SHOW GIRL - 13 TO 16 YEARS

To live within 50 kilometre radius of showgrounds.

Winner to receive Sash and Gift.

Stewards: Ann Hernan, Judy Geddes and Daryl Feldtmann.

CITIZEN DOOKIE - 17 TO 28 YEARS

Hands-on Competition.

To live within 50 kilometre radius of showgrounds.

Winner to receive Gift.

Stewards: TBA

Judging: Will commence after Tiny Tot section.



LORENZ

EYEWEAR SERVICES

Spectacle Makers and Repairs
Unsurpassed Selection and Service

PETER LORENZ (03) 58 314 614

147 FRYERS STREET, SHEPPARTON

Email: lorenzeyewear@bigpond.com



maxam

printing

79 Drummond Road Shepparton Vic 3630
E print@maxamprinting.com.au Tel **5831 5831**



GET PAID FOR YOUR SCRAP!

- Buyers of all ferrous and non ferrous metals
- Old farm machinery
- Car and truck bodies

Mon to Fri 8 - 4.30pm – Sat 8 - 12noon

**121 Old Dookie Road
Shepparton**

Tel. 5821 7876

(137329)

www.futurerecycling.com.au

HORSES

RING 1 – CLASS A

Double Chance Ring for Open and Show Hunters

Entries Close:	ENTER ON SHOW DAY
Entry Fee:	\$2.00
Judging:	Commences at 9.00am
Judge:	TBA on Show Day
Prize:	1st - \$4.00, 2nd - \$2.00, 3rd - Ribbon

- 1 - NOVICE GALLOWAY, over 14 and not over 15 hands
- 2 - OPEN GALLOWAY, over 14 and not over 14.2 hands
- 3 - OPEN GALLOWAY, over 14.2 and not over 15 hands

CHAMPION AND RESERVE CHAMPION OPEN GALLOWAY

- 4 - SHOW HUNTER GALLOWAY, over 14 and not over 14.2 hands
- 5 - SHOW HUNTER GALLOWAY, over 14.2 and not over 15 hands

CHAMPION AND RESERVE SHOW HUNTER GALLOWAY

- 6 - LADIES HACK
- 7 - OPEN HACK, over 15 and not over 15.2 hands
- 8 - OPEN HACK, over 15.2 and not over 16 hands
- 9 - OPEN HACK, over 16 and not over 16.2 hands
- 10 - OPEN HACK, over 16.2

CHAMPION AND RESERVE CHAMPION OPEN HACK

- 11 - SHOW HUNTER HACK, over 15 and not over 15.2 hands
- 12 - SHOW HUNTER HACK, over 15.2 and not over 16 hands
- 13 - SHOW HUNTER HACK, over 16 and not over 16.2 hands
- 14 - SHOW HUNTER HACK, over 16.2

CHAMPION AND RESERVE CHAMPION SHOW HUNTER HACK

- 15 - CHILD'S PONY
- 16 - OPEN PONY, 11.2 hands and under
- 17 - OPEN PONY, over 12.2 hands and not over 13 hands
- 18 - OPEN PONY, over 13.2 hands and not over 14 hands

CHAMPION AND RESERVE CHAMPION OPEN PONY

- 19 - SHOW HUNTER PONY, under 11.2 hands
- 20 - SHOW HUNTER PONY, 11.2 and not over 12 hands
- 21 - SHOW HUNTER PONY, 12 and not over 12.2 hands

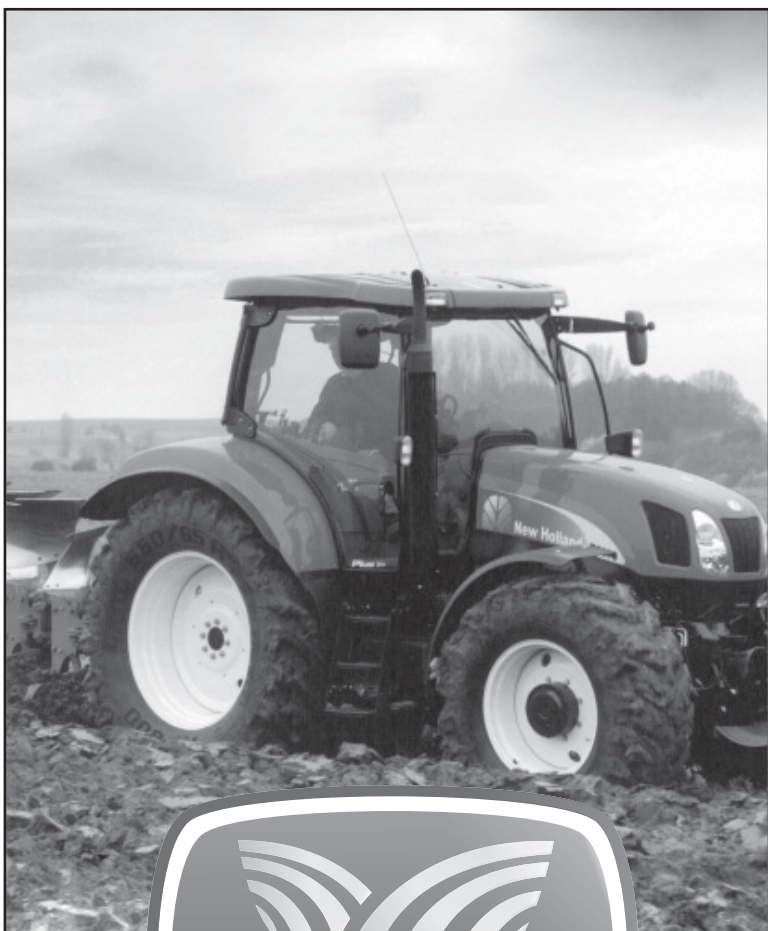
CHAMPION AND RESERVE CHAMPION SMALL SHOW HUNTER PONY

- 22 - SHOW HUNTER PONY, 12.2 and not over 13 hands
- 23 - SHOW HUNTER PONY, 13 and not over 13.2 hands
- 24 - SHOW HUNTER PONY, 13.2 and not over 14 hands

CHAMPION AND RESERVE CHAMPION LARGE SHOW HUNTER PONY

TROPHY

Supreme Ridden Horse, all ridden Champions from ring 1 & 2 eligible.
\$100 prize in memory of Jill Kellock.



21 Telford Drive
Shepparton Vic. 3630

Mobile: 0437 523 315

Ph: 03 5832 3500 (24 hours)

Fax: 03 5832 3599

Email: neill@sheppartonag.com.au



Ring 2 – Class B

Double Chance Ring for Open and Show Hunters

Entries Close:	ENTER ON SHOW DAY
Entry Fee:	\$2.00
Judging:	Commences at 9.00am
Judge:	TBA on Show Day
Prize:	1st - \$4.00, 2nd - \$2.00, 3rd - Ribbon

- 1 - NOVICE PONY, not over 14 hands
- 2 - OPEN PONY, under 11.2 hands
- 3 - OPEN PONY, 11.2 and not over 12 hands
- 4 - OPEN PONY, 12 and not over 12.2 hands

CHAMPION AND RESERVE CHAMPION SMALL OPEN PONY

- 5 - OPEN PONY, 12.2 and not over 13 hands
- 6 - OPEN PONY, 13 and not over 13.2 hands
- 7 - OPEN PONY, 13.2 and not over 14hands

CHAMPION AND RESERVE CHAMPION LARGE OPEN PONY

- 8 - SHOW HUNTER PONY, 12 hands and under
- 9 - SHOW HUNTER PONY, over 12 hands and not over 12.2 hands
- 10 - SHOW HUNTER PONY, over 12.2 hands and not over 13 hands
- 11 - SHOW HUNTER PONY, over 13 hands and not over 13.2 hands
- 12 - SHOW HUNTER PONY, over 13.2 hands and not over 14 hands

CHAMPION AND RESERVE CHAMPION SHOW HUNTER PONY

- 13 - NOVICE HACK
- 14 - OPEN HACK, over 15 and not over 15.2 hands
- 15 - OPEN HACK, over 15.2 and not over 16 hands
- 16 - OPEN HACK, over 16 and not over 16.2 hands
- 17 - OPEN HACK, over 16.2

CHAMPION AND RESERVE CHAMPION OPEN HACK

- 18 - SHOW HUNTER HACK, over 15 and not over 15.2 hands
- 19 - SHOW HUNTER HACK, over 15.2 and not over 16 hands
- 20 - SHOW HUNTER HACK, over 16 and not over 16.2 hands
- 21 - SHOW HUNTER HACK, over 16.2

CHAMPION AND RESERVE CHAMPION SHOW HUNTER HACK

- 22 - LADIES GALLOWAY, over 14 and not over 15 hands
- 23 - OPEN GALLOWAY, over 14 and not over 14.2 hands
- 24 - OPEN GALLOWAY, over 14.2 and not over 15 hands

CHAMPION AND RESERVE CHAMPION OPEN GALLOWAY

- 25 - SHOW HUNTER GALLOWAY, over 14 and not over 14.2 hands
- 26 - SHOW HUNTER GALLOWAY, over 14.2 and not over 15 hands

CHAMPION AND RESERVE SHOW HUNTER GALLOWAY TROPHY

Supreme Ridden Horse, all ridden Champions from ring 1 & 2 eligible.

\$100 donated by the Kellock Family

MacDonald Bulk Spreading Pty Ltd



- Specialist in Spreading Lime, Gypsum and Granulated Fertiliser
- GPS Guidance and Variable Rate Spreading

Contact Andrew MacDonald

Mobile 0417 052 043

Email spreader68@gmail.com

578 Dookie-Nalinga Road Mount Major 3646

Ring 3 – Class C

(Led, SOP, Rider Classes, Local Classes, Good Hands)

Entries Close: ENTER ON SHOW DAY
Entry Fee: \$2.00
Judging: Commences at 9.00am
Judge: TBA on Show Day
Prize: 1st - \$4.00, 2nd - \$2.00, 3rd - Ribbon

- 1 - LED TURNOUT, Any age. Open to all horses and ponies, to be judged on a point system. Dress optional. **Sash for 1st, Ribbons for 2nd, 3rd & 4th**
- 2 - LED PONY, not over 14 hands
- 3 - LED GALLOWAY, over 14 and not over 15 hands
- 4 - LED HACK, over 15 hands

CHAMPION AND RESERVE CHAMPION LED HORSE

- 5 - SMARTEST ON PARADE, under 12 years. **Sash for 1st, 2nd & 3rd**
- 6 - SMARTEST ON PARADE, 12 and under 18 years. **Sash for 1st, 2nd & 3rd**
- 7 - SMARTEST ON PARADE, 18 years and over. **Sash for 1st, 2nd & 3rd**
- 8 - GOOD HANDS, for girls 12 and under 15 years
- 9 - GOOD HANDS, for boys 12 and under 15 years
- 10 - RIDER, 18 and under 21 years
- 11 - RIDER, 21 and under 30 years
- 12 - RIDER, 30 years and over

CHAMPION AND RESERVE CHAMPION SENIOR RIDER

- 13 - RIDER, 16 and under 18 years
- 14 - RIDER, 14 and under 16 years
- 15 - RIDER, 12 and under 14 years

CHAMPION RIDER UNDER 18 (J. HARKER TROPHY)

- 16 - RIDER, 10 and under 12 years
- 17 - RIDER 8 and under 10 years
- 18 - RIDER 5 and under 8 years
- 19 - RIDER, under 5 years, may be led

CHAMPION RIDER UNDER 12 YEARS (MCRORIE MEMORIAL TROPHY)

- 20 - LOCAL RIDER, to live within 50km radius of Dookie. **Voucher Donated by Horseland**
- 21 - LOCAL PONY, to live within 50km radius of Dookie. **Voucher Donated by Horseland**
- 22 - LOCAL GALLOWAY, to live within 50km radius of Dookie. **Voucher Donated by Horseland**
- 23 - LOCAL HACK, to live within 50km radius of Dookie. **Voucher Donated by Horseland**



 **Haeusler's**

SHEPPARTON
375 Goulburn Valley Hwy
5820 9700

 **JOHN DEERE**

FOR ALL YOUR COMPACT UTILITY TRACTOR NEEDS

Build something great™



Boral Quarries

**Suppliers of crushed rock,
road bases, aggregates & sand.**

Cosgrove	5828 8255
Katunga	5864 6498
Technical	5828 8311

Boral Concrete

Cobram	5872 2417
Kyabram	5852 1794
Finley	5883 1209
Jerilderie	5883 1209
Moama	5482 3497
Mulwala	5744 1757
Nagambie	5794 1926
Numurkah	5862 1683
Shepparton	5821 2399
Tatura	5824 1979
Tocumwal	5874 2050
Benalla	5762 7467

Ring 4 – Pony Club Events

Entries Close:	ENTER ON SHOW DAY
Entry Fee:	\$1.00
Judging:	Commences at 9.30am
Judge:	TBA on Show Day
Prize:	Ribbons to 3rd place

CONDITIONS:

- Pony Club rules apply to all Pony Club events
- Pony Club uniform (including approved PCAV helmets) required
- Only PCAV approved snaffle bits allowed (as per PCAV dressage book)

- 1 - BEST PRESENTED, 9 and under
- 2 - BEST PRESENTED, 10 to 13 years
- 3 - BEST PRESENTED, 14 to 18 years
- 4 - BEST PRESENTED, over 18 years
- 5 - PLEASURE PONY, not over 12 hands
- 6 - PLEASURE PONY, 12.1 to 13 hands
- 7 - PLEASURE PONY, 13.1 to 14 hands
- 8 - PLEASURE GALLOWAY, not over 15 hands
- 9 - PLEASURE HACK
- 10 - PAIR OF RIDERS, 13 years and under
- 11 - PAIR OF RIDERS, 14 years and over
- 12 - GIRL OR BOY RIDER, under 8 years (may be led)
- 13 - GIRL OR BOY RIDER, 8 to 10 years
- 14 - GIRL OR BOY RIDER, 11 to 14 years
- 15 - GIRL OR BOY RIDER, 15 years and over
- 16 - PONY CLUB MOUNT, under 8 years (may be led)
- 17 - PONY CLUB MOUNT, 8 to 13 years
- 18 - PONY CLUB MOUNT, 14 to 15 years
- 19 - PONY CLUB MOUNT, 16 years and over
- 20 - PAIR OF PONIES, not over 14 hands
- 21 - PAIR OF GALLOWAYS, not over 15 hands
- 22 - PAIR OF HACKS, over 15 hands
- 23 - TRIO OF RIDERS
- 24 - BAREBACK RIDER, under 10 years
- 25 - BAREBACK RIDER, under 15 years
- 26 - BAREBACK RIDER, over 15 years

TROPHY

Best Aggregate for a Pony Club Rider, 1st - 20 points, 2nd - 15 points, 3rd - 10 points

Phone: (03) 5821 3188



SheppVets
Shepparton & Kialla

Shepparton Clinic and Hospital:

Corner of Numurkah and Wanganui Roads
2 Wanganui Road,
Shepparton VIC 3631
Phone: **(03) 5821 3188**

Kialla Clinic:

7966 Goulburn Valley Highway
Kialla VIC 3631
Phone: **(03) 5823 1202**
Email: admin@sheppvets.com.au (both clinics)

Consultations by Appointment

After Hours Emergency Service Available



- Standard Exhaust Systems • Truck Mufflers • Extractors
- Sport Systems • Towbars Supplied and Fitted

5821 7776

59 MITCHELL STREET, SHEPPARTON

Sales



Repairs

montage
electronics

Ph: 03 5831 4709 • Fax: 03 5821 8187

www.montageelectronics.com.au

Miele

**Premier
Clean**

APPLITE
PTY. LTD.

All Lighting & Quality Appliance Centre

P.O. Box 7383,
13 Callister Street,
Shepparton, 3632

Ph. (03) 5831 2303

Special Class – Clydesdales

Entries Close:	ENTER ON SHOW DAY
Entry Fee:	\$1.00
Judging:	to commence at 1.30pm
Judge:	
Prizes:	1st - \$4.00, 2nd - \$2.00, 3rd – Ribbon Prizes to be collected from Secretary's Office after 4.30 pm

RULES:

- Exhibits entered must be registered with the CCHS unless stated otherwise

1 - LED CLYDESDALE MALE, 3 years and over

2 - LED CLYDESDALE MALE, 2 years

3 - LED CLYDESDALE MALE, 1 year

Champion & Reserve Champion Male, 3 years and over

Junior Champion & Reserve Junior Champion Male, 2 years and under

4 - LED CLYDESDALE FEMALE, 3 years and over

5 - LED CLYDESDALE FEMALE, 2 years

6 - LED CLYDESDALE FEMALE, 1 year

Champion & Reserve Champion Female, 3 years and over

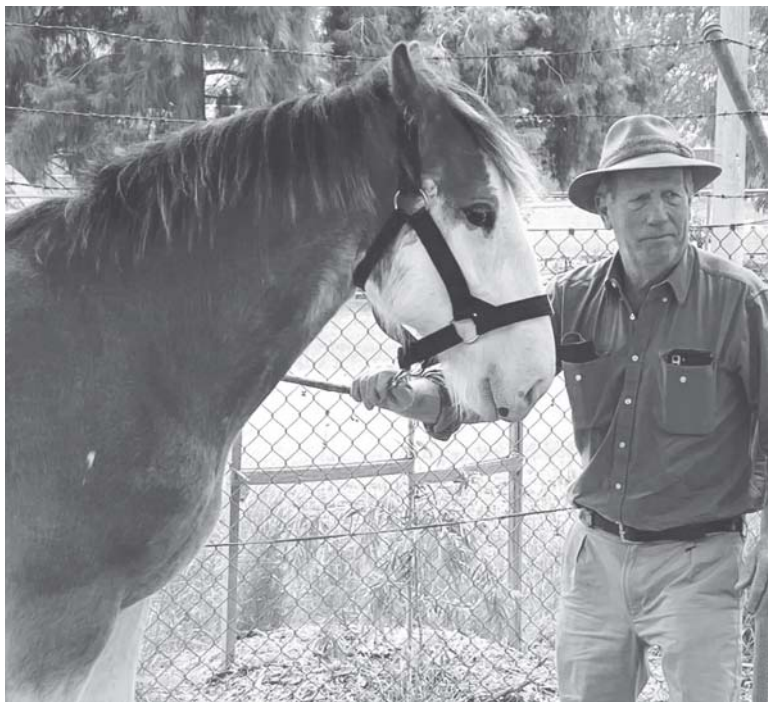
Junior Champion & Reserve Junior Champion Female, 2 years and under

Supreme Champion Clydesdale. Trophy donated by Ian Feldtmann

7 - CLYDESDALE, driven in reins

8 - LED FARM HORSE any age (unregistered)

9 - FARM HORSE driven in reins (unregistered)





MOUNT MAJOR MURRAY GREYS

BS DAVIDSON & DR SJ CHAPLIN

871 DOOKIE RD YABBA NORTH
VIC 3646

PH. 0459 999 662

davo@mountmajormurraygreys.com.au

www.mountmajormurraygreys.com.au

For profitable, easy-care cattle

BULLS FOR SALE



Robert Wilson

Mobile: 0419 601 032

North East Hydraulics

CLASS F - BEEF CATTLE

Entries Close: Wednesday 25th October, 5.00pm

Entry Fee: \$2.00

Judging: to commence at 9.30am

Stewards: Sarah Chaplin, Tony Ludeman & Brett Davidson

Prize: 1st - \$5.00, 2nd - \$3.00. Champion ribbons donated by the Stedman Family
Prizes to be collected from Secretary's Office after 4.30pm

Grand Champion Male. Donated by Elders Insurance

Grand Champion Female. Donated by Mount Major Murray Greys

Supreme Champion. Donated by Elders Insurance

Best Aggregate. Donated by the Stedman Family

RULES:

- Exhibits in this section are restricted to animals entered in the Calf Roll or Herd Book of their respective breeds
- All cattle must carry a NLIS tag
- All breeds will be judged together
- As a condition of entry, all cattle exhibitors are required to provide a signed Cattle Herd Health Status Declaration. For further details, contact the Secretary

1 - BULL under 12 months

2 - BULL 12-15 months

3 - BULL 15-18 months

4 - BULL 18-20 months

5 - COW under 12 months

6 - COW 12-15 months

7 - COW 15-18 months

8 - COW 18-20 months

Junior Champion Male

Junior Champion Female

Reserve Junior Champion Male

Reserve Junior Champion Female

9 - BULL 20-24 months

10 - BULL 24-30 months

11 - BULL over 30 months

12 - COW 20-24 months

13 - COW 24-30 months

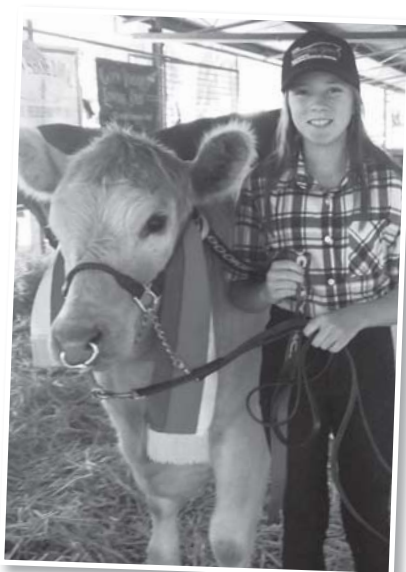
14 - COW over 30 months

Senior Champion Male

Senior Champion Female

Reserve Senior Champion Male

Reserve Senior Champion Female



JUNIOR HANDLERS' COMPETITION UNDER 20 YEARS OF AGE

Entries Close: ENTER ON SHOW DAY

Entry Fee: No entry fee

Judging: to commence immediately after cattle judging

Prize: 1st - \$10.00, 2nd - \$5.00, 3rd - \$2.00

RULES:

- **Junior Handlers to be under 20 years of age**
- **To be judged on competitor's ability in handling an animal in the ring**

SUTHERLAND FREIGHTLINES P/L

Dean Sutherland

100 Mary Street Dookie 3646 | Ph 0412 834 169
Email dean@sutherlandhaulage.com.au | Fax 03 5828 6503

Specialising in • Lime & Gypsum Supplies • Bulk Grain & Fertilizer Cartage
• Machinery Cartage & Oversized Loads • Loader & Forklift Hire

Shepparton Acupuncture

& CHINESE MEDICINE CLINIC

ESTABLISHED 1990

KLAUS LUCATTINI & ASSOCIATES

ACUPUNCTURE * CHINESE MEDICINE

537 Wyndham St, Shepparton

5831 3137



For quick
service
call ahead

Ph 5828 6217

**DOOKIE GENERAL STORE
& TAKEAWAY**

OPEN 7 DAYS

- Fish & Chips
- Hamburgers
- Cold drinks
- Ice-Creams
- Tea & Coffee
- Newspapers
- Groceries
- Ice

CLASS H - SHEEP

Entries Close: Wednesday 25th October, 5.00pm
Entry Fee: \$2.00
Judging: to commence at 9.30am
Chief Steward: Ron Harker
Steward: Des Thorp, Ian Feldtmann, Selwyn Geddes
Prizes: 1st - \$4.00, 2nd - \$2.00



RULES

- All animals born after 1 June 2017 must have an NLIS Tag.
- Exhibits restricted to animals bred in a registered flock, visibly tattooed with their breeder's flock number and the trade mark of their respective breed society
- All sheep entered must be from an OVINE BRUCELLOSIS ACCREDITED FREE FLOCK, or all rams must have been individually tested before being shown
- Prizes to be collected from Secretary's Office after 4.30 pm
- Strong Wool: Any other strong wool breed, including Carpet Wool Sheep (shorn or in wool)

Champion Strongwool Ribbon donated by Elders Insurance

		Dorper	Border Leics.	Southdown	Dorset Horn	Poll Dorset	White Suffolk	Romney	Poll Merino	Merino	Strong wool	Suffolk
Ram, over 1½ years	shorn	1	7	13	19	25	31	37	43	49	55	61
Ewe, over 1½ years	shorn	2	8	14	20	26	32	38	44	50	56	62
Ram, under 1½ years	shorn	3	9	15	21	27	33	39	45	51	57	63
Ewe, under 1½ years	shorn	4	10	16	22	28	34	40	46	52	58	64
Ram lamb	shorn	5	11	17	23	29	35	41	47	53	59	65
Ewe lamb	shorn	6	12	18	24	30	36	42	48	54	60	66

67 - PEN OF 3 PRIMELAMBS(unshorn), over 36 kg (80 lb), most suitable for trade

68 - PEN OF 3 PRIMELAMBS(unshorn), under 36 kg (80 lb), most suitable for trade

69 - PEN OF 3 PRIMELAMBS(shorn), most suitable for trade. Registered lambs not eligible
 – Most suitable for trade.

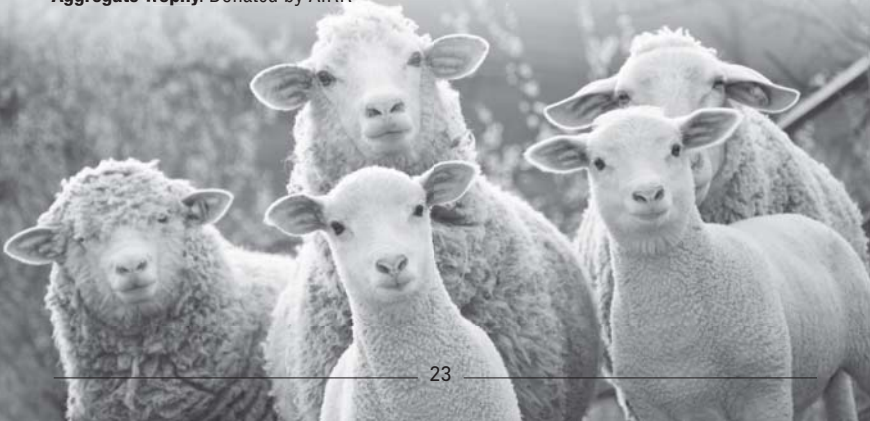
TROPHIES

Grand Champion Ram (all breeds). Trophy & ribbon in loving memory of Col and Gwen Kay, donated by Nola Cruze.

Grand Champion Ewe (all breeds). Trophy & ribbon donated by J. W. & A. S. Beattie.

Supreme Group of Three (one ram and two ewes of any age). Donated by P. & N. O'Sullivan.

Aggregate Trophy. Donated by AIRR





Farm insurance that fits

For many Australians, farming is more than just an occupation; it's a way of life. That's why we offer a range of farm insurance options to suit your needs.

Contact your local Agent today.

Will Phillips 0438 219 612

Richard Barry 0427 270 675

Shepparton, Kyabram & Tatura

eldersinsurance.com.au/shepparton



Insurance

W.C. Phillips Holdings Pty Ltd ABN 50099316542 trading as Elders Insurance Shepparton AR No. 256102 is an Authorised Representative of Elders Insurance (Underwriting Agency) Pty Limited ABN 56 138 879 026, AFSL 340965. Insurance is underwritten by QBE Insurance (Australia) Limited ABN 78 003 191 035 AFSL 239545. Contact us for a Product Disclosure Statement to decide if a product is right for you.

CLASS I - POULTRY



Entries Close: Wednesday 25th October, 5.00pm
Entry Fee: Non Members 50¢.
 Members Free. (Limit of 2 Entries per person in any Section).
Judging: To commence at 10.30am
Prizes: 1st - \$1.00, 2nd - 50¢ **Champions**
 - bag of layer pellets, donated by Rivalea
 Rosettes for Champion and Reserve
 Champion Bird in Show

RULES

- Limited number of coops available - entries will be processed on a 'first in' basis.
- Birds must be penned by 10.00am. Pen numbers to be picked up morning of show.
- Food and water to be supplied by owner.
- Prizes will be paid at the Secretary's Office after 4.30pm.

LIGHT	Male	Female	SOFTFEATHER BANTAMS	Male	Female
Leghorn - White	1	2	Australorp	69	70
Leghorn - AOC	3	4	Ancona	71	72
Ancona	5	6	Langshan Black	73	74
Hamburg - Black	7	8	Langshan AOC	75	76
Hamburg - Silver Spangle	9	10	Leghorn White	77	78
Hamburg - AOC	11	12	Leghorn AOC	79	80
Silkie	13	14	Orpington	81	82
OEG - Black Red	15	16	Pekin Black	83	84
OEG - Blue Red	17	18	Pekin AOC	85	86
OEG - Pile	19	20	Rosecomb	87	88
OEG - AOC	21	22	Rhode Island Red	89	90
AOV Light Breed	23	24	Seabright	91	92

CHAMPION LIGHT BREED

HEAVY	Male	Female
Australorp	25	26
Plymouth Rock	27	28
Rhode Island Red	29	30
AOC Wyandotte	33	34
Indian Game	35	36
Sussex	37	38
Langshan	39	40
AOV Heavy Breed	41	42

CHAMPION HEAVY BREED

HARDFEATHER BANTAMS	Male	Female
Modern Black Red	43	44
Modern Duckwing	45	46
Modern Pile	47	48
Modern AOC	49	50
Indian Game	51	52
OEG Black Red LL	53	54
OEG Black Red DL	55	56
OEG Duckwing	57	58
OEG Blue Red	59	60
OEG Pile	61	62
OEG Spangle	63	64
OEG AOC	65	66
AOV Hardfeather Bantam	67	68

CHAMPION HARD FEATHER BANTAM

CHAMPION SOFT FEATHER BANTAM

JUNIOR EXHIBITORS (UNDER 14 years)

Light Breed	104	105
Heavy Breed	106	107
Hardfeather Bantam	108	109
Softfeather Bantam	110	111

CHAMPION BIRD IN JUNIOR SECTION

WATERFOWL	Drake	Duck
Muscovy	112	113
Buff Orpington	114	115
Rouen	116	117
Indian Runner	118	119
Khaki Campbell	120	121
AOV Heavy	122	123
AOV Light	124	125
AOV Bantam	126	127

CHAMPION WATERFOWL

TURKEYS	Male	Female
Bronze	128	129
White	130	131
AOC	132	133

CHAMPION TURKEY

I K Caldwell **AGnVET**



I K Caldwell AGnVET is an independently owned business servicing clients across a considerable area and with branches in **Ballarat, Cobram, Corowa, Deniliquin, Moama, Rochester and Shepparton** we are able to deliver a range of agronomic and service packages extensively throughout the Goulburn Valley, Northern Victoria and Southern Riverina regions.

AGpack™

AGpack was formed in 2008 and successfully provides bespoke transparent agronomic advice tailored for your farming business.

ikcaldwell.com.au



CLASS J - WOOL

Entries Close: Wednesday 25th October, 5.00pm

Entry Fee: \$2.00

Judging: to commence at 9.30am

Stewards: Ian Shields, Brian Harker, Kirsty Harker & Scott Lang

Prizes: 1st - \$4.00; 2nd - \$1.00, Champion Ribbons for each breed.

Prizes to be collected from Secretary's Office from 4.30pm.

Champion Plaque & Ribbon for Fleece with Highest Points Score.

Sponsored by AAA. Winner to continue onto group competition in March next year.

Trophy for Most Valuable Fleece. Donated by Riverina Wool, Moama.

Aggregate Trophy for most points in wool section. Donated by Ferguson Wool.

RULES

- Fleeces enclosed in hessian, fastened with wool clips, will be entered in correct section on ground
- All Merino and crossbred lambs' fleeces are to be donated to Show Society
- All fleeces must be skirted

A1 - FINE WOOL MERINO FLEECE, from a ewe or wether

A2 - MEDIUM WOOL MERINO FLEECE, from a ewe or wether

A3 - STRONGWOOL MERINO FLEECE, from a ewe or wether

CHAMPION MERINO FLEECE

A4 - FINE CROSSBRED FLEECE, from a ewe or wether

A5 - STRONG CROSSBRED FLEECE, ewe or wether fleece

CHAMPION CROSSBRED FLEECE

A6 - STRONGWOOL EWE OR WETHER FLEECE

A7 - STRONGWOOL LAMB'S FLEECE

A8 - STRONGWOOL RAM'S FLEECE

CHAMPION STRONGWOOL FLEECE

A9 - 1 KILOGRAM MERINO LAMBSWOOL. 1st - \$10.00, 2nd - Ribbon

A10 - 1 KILOGRAM CROSSBRED LAMBSWOOL. 1st - \$10.00, 2nd - Ribbon

DOOKIE MERINO PERFORMANCE FLEECE COMPETITION (Prem Shorn)

Entries Close: Wednesday 25th October, 5.00pm

Entry Fee: \$2.00

Judging: to commence at 9.30am

Stewards: Ian Shields, Brian Harker, Kirsty Harker

Prizes: 1st - \$50.00; 2nd - \$25.00, Champion Performance Fleece - \$100.00

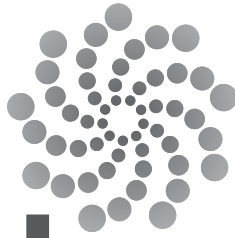
CONDITIONS OF ENTRY

- Fleeces must be no less than 6 and no more than 8 months' growth
- Fleeces must be shorn from a commercial ewe or wether
- Fleeces must have been shorn in the current season
- All fleeces entered will be donated to an organisation chosen by the major sponsor

2023 Major Sponsor: Shields Family, "Minona" Dookie. Fleeces being donated to Devenish, Dookie & District Good Friday Appeal

B1 - FINE WOOL MERINO

B2 - MEDIUM / STRONG WOOL MERINO



act
PETROLEUM

Colin + Tereza Richardson

**Your Friendly
LOCAL
fuel distributor**

☎ 03 5822 2288

0418 570 010 – Colin

SHEPPARTON

VAS LTD FLEECE COMPETITION



Overview of Competition

All Shows that run a Fleece competition be eligible to submit a fleece in the competition at Group Level.

Winning fleece at Group Level will represent the Group at the State Final to be held in conjunction with the State Conference (June/July) each year.

General Rules & Regulations

1. An exhibitor having won the overall Champion Fleece at a Show, will be eligible for the Group Final; the winner will then be required to submit a Fleece at the State Final.
2. An exhibitor is only eligible to represent one Group in the State Final.
3. Each Fleece entered must be a bona fide product of the exhibitor.
4. If for any reason a winner is unable to compete at Group or State Final level, then the second-place getter is eligible to compete.
5. All fleeces to be returned to the owner at the completion of the competition.

State Final Prizes

First: \$250.00 & VAS State Final Trophy **Second:** \$150.00 **Third:** \$50.00

Show Level

- Overall winning Champion Fleece at the local Show is to be the representative from the local Show to the Group Final.
- Fleeces may not necessarily be the winning Fleece at the local Show to be the entry at the Group or State Final. *Note: (A different Fleece can be exhibited as it is recognised that fleeces can alter their brightness or shape after being handled or on display for some time.)*
- Winning Champion Fleece entrant details to be submitted to the Group Secretary to be invited to represent the Society at the Group Final

Group Level

- Winning Fleeces from the respective Group Shows will be judged by an appointed judge.
- Overall winning Fleece will represent the Group at the State Final to be held at the State Conference each year.
- Group Secretaries to provide winners details to the VAS office at the time of lodging other competition winners.

State Final

- Final to be held at the VAS Ltd Conference and all Group winners will be notified by the VAS Office.
- An appointed Judge selected by VAS & the Conference Committee will be appointed to judge the State Final.

L.D.K. TRAILERS & TRUCK TRAYS

Manufacturers and Spare Parts

Bob Johnson

60 NEW DOOKIE ROAD, PHONE: (03) 5831 1720
SHEPPARTON, 3630 FAX: (03) 5821 7672



GrainCorp

GRAINCORP IS A PROUD SUPPORTER OF THE DOOKIE SHOW

For all operational enquiries at
your local Dookie site
call Grain Services Manager
Brenton Doig 0427 927 426

If you are weighing up your grain
marketing options call us to talk

- Pools
- Cash and Forward Contracts
- Warehousing

Danny Verbeek 03 5431 1236

www.graincorp.com.au

1800 809 482

CLASS L - FARM PRODUCE

This section has been kindly sponsored by Grain Corp

Entries Close: Wednesday 25th October, 5.00pm

Entry Fee: Non Members 50¢. Members Free.
Limit of 2 Entries per person
in any Section.

Staging: Exhibits to be delivered to the
pavilion between 4.00pm - 5.30pm
on Friday prior to show
to commence at 9.00am

Judging:

Chief Steward: Ross Geddes

Prizes: 1st - \$2.00, 2nd - \$1.00
Exhibits may be removed and prize money
collected from 4.30pm

Champion Ribbon for Best Exhibit



RULES

- Exhibits in this class must be grown by the exhibitor within the last 12 months.

OPEN SECTION

- 1 - 12 kg PASTURE HAY, grown in a dry area
- 2 - 12 kg LUCERNE HAY
- 3 - 12 kg CLOVER HAY (dry area past 12 months)
- 4 - 12 kg CEREAL HAY
- 5 - BUNDLE OF GREEN LUCERNE, grown under field conditions
- 6 - BUNDLE OF GREEN FODDER, other than cereal, grown under field conditions

KIDS' FARM PRODUCE (UNDER 16 YEARS)

- 7 - BEST COLLECTION OF FARM PRODUCE, not less than five varieties
- 8 - BEST COLLECTION OF FARM SEEDS, in separate jars
- 9 - BIRD SCARER, homemade

BEST KIDS' CROPS

A large ice-cream container full of any of the following crops dug up from your relatives' paddocks (roots and all). A section ticket must be attached to the container.

- | | |
|-------------|----------------|
| 10 - CANOLA | 14 - LUPINS |
| 11 - WHEAT | 15 - PEAS |
| 12 - OATS | 16 - TRITICALE |
| 13 - BARLEY | |

Nutrien *Ag Solutions™*

*We have you covered for
all your rural and farming needs*

Merchandise

Agronomy Service

Horticultural Service

Fertilizer (Bulk or B/B)

Livestock

Insurance

Real Estate

Water

Finance (Seasonal & Livestock)

Shepparton Office

295 Benalla Road, Shepparton, Vic, 3630
Phone: 03 5833 0222

Congupna – Fertilizer Depot

3600 Katamatite-Shepparton Road,
Congupna, Vic, 3633
Phone: 03 5877 2001

Cobram Office

102 Broadway St, Cobram, Vic, 3643
Phone: 03 5871 1088

STAGING TIMES - FOR PAVILION CLASSES

Staging: In the following classes exhibits must be delivered to the George Batey Pavilion between 5.00pm – 7.00pm on Friday, or on Show Day between 7.00am – 8.30am.

Entries: Entry Forms must be submitted by WEDNESDAY 25th OCTOBER at 5.00pm., posted to PO Box 18, Dookie, Vic., 3646.

CLASSES M - S (NEEDLEWORK & CRAFT)

Staging: In the following classes exhibits must be delivered to the **George Batey Pavilion** between 5.00pm – 7.00pm on Friday, or on show day between 7.00am – 8.30am.

Judging: To commence at 9.00am. Any exhibits not staged (set up ready for judging) by 8.45am will not be judged.

CLASS M EGGS

CLASS N GARDEN PRODUCE

CLASS O FLOWERS AND POT PLANTS - (entries close Thursday prior to show 5.00 pm)

CLASS P FLORAL ART - (Entries close Thursday prior to show 5.00 pm)

CLASS Q COOKERY

CLASS R JAMS, JELLIES AND PRESERVES

CLASS S NEEDLEWORK AND CRAFT

CLASSES S (ARTWORK) - V

Staging: In the following classes exhibits must be delivered to the George Batey Pavilion on the Thursday prior to Show Day between 4.00pm - 5.30pm

Judging: Judging will take place on Friday.

CLASS S ARTWORK

CLASS U SCHOOLWORK

CLASS V PHOTOGRAPHY

**PLEASE READ YOUR
SCHEDULE CAREFULLY**



Peter Davis Rural

Suppliers of Rural Merchandise

Gillies Street Benalla 3672 • Ph 03 5762 6522

**For friendly, professional service and advice,
visit your local independent rural supplier.**

Suppliers of:

- Bulk Fertilizers
- Seed
- Soil Testing
- Fencing Supplies
- Lime
- Chemicals
- Agromony Service
- Water Troughs
- Gypsum
- Fertilizer Spreading Service
- Animal Health Products

FENCING PRODUCE & STEEL



PRODUCE

- Horse Feed
- Cattle Feed
- Poultry/Dog & Cat Feed



FARMING

- Pastures & Cereal
- Seed
- Ag Chemicals
- Drenches
- Agronomy



STEEL

- Aluminium
- RHs & Pipe
- Gates
- Poly Pipe
- Mesh
- Sheeppyard Mesh/Panels
- Flat & Angles
- Star Posts
- Pine Poles
- Purlines
- Wire

H W.B. HUNTER

20-28 Florence St, Shepparton. 5821 5744

"We Cut Your Steel to the Length you Want"

STEWART COOMBES – Hay & Grain Trading 0459 215 744

NEVILLE MANTON – Grain Sales 0438 215 744

MARCUS O'DWYER – 0447 215 744

CLASS M - FARM EGGS

Entries Close:

Entry Fee:

Staging:

Judging:

Steward:

Prizes:

Wednesday 25th October at 5.00pm

Non Members 50¢. Members Free.

Limit of 2 Entries per Person in any Section

SEE PAGE 33 FOR STAGING TIMES

to commence at 9.00am

Russell Kee

1st - \$1.00, 2nd - 50¢

Exhibits may be removed and prize money collected from 4.30pm onwards



RULES

- Eggs must be presented in egg cartons only
- All eggs must be produced by the exhibitor's own birds

- 1 - ONE DOZEN HEN EGGS, white shells
- 2 - ONE DOZEN HEN EGGS, brown shells
- 3 - ONE DOZEN HEN EGGS, no colour specified
- 4 - ONE DOZEN BANTAM EGGS, no colour specified
- 5 - THREE JUMBO HEN EGGS, no colour specified
- 6 - THREE DUCK EGGS



CLASS N - GARDEN PRODUCE

Entries Close:

Entry Fee:

Staging:

Judging:

Stewards:

Prizes:

Wednesday 25th October at 5.00pm

Non Members 50¢. Members Free.

Limit of 2 Entries per Person in any Section.

SEE PAGE 33 FOR STAGING TIMES

to commence at 9.00am

Robyn Tyers, Sue Bennett

1st - \$1.00, 2nd - 50¢

Exhibits may be removed and prize money collected from 4.30pm onwards

Aggregate Trophy. Donated by Peter Davis Rural.

RULES

- Produce must have been grown by the exhibitor

- 1 - ONE CABBAGE
- 2 - SIX STALKS OF SILVER BEET
- 3 - THREE CARROTS
- 4 - THREE WHITE ONIONS
- 5 - ONE HEAD OF LETTUCE
- 6 - ONE HEAD OF BROCCOLI
- 7 - SIX STALKS OF RHUBARB
- 8 - COLLECTION OF CULINARY HERBS
- 9 - PUMPKIN
- 10 - BUTTERNUT PUMPKIN
- 11 - 250g GREEN PEAS
- 12 - COLLECTION OF GARDEN PRODUCE, not less than 6 varieties. 1st - \$2, 2nd - \$1
- 13 - ONE BUNCH OF RED BEET
- 14 - ONE PUNNET OF STRAWBERRIES
- 15 - ONE DOZEN BROAD BEANS
- 16 - FIVE NAVEL ORANGES
- 17 - FIVE VALENCIA ORANGES
- 18 - FIVE LEMONS
- 19 - FIVE GRAPEFRUIT
- 20 - FIVE MANDARINES



CLASS O - FLOWERS & POT PLANTS

- Entries Close:** Wednesday 25th October at 5.00pm
Entry Fee: Non Members 50¢. Members Free.
Limit of 2 Entries per Person in any Section.
Staging: SEE PAGE 33 FOR STAGING TIMES
Judging: to commence at 9.00am
Steward: Marie Thorp, Mr. R. Bennett & Kate McKinley
Prizes: 1st - \$1.00, 2nd - 50¢
Exhibits may be removed and prize money collected from 4.30pm onwards.

RULES

- All exhibits to be those of amateurs only.
- Unstable exhibits will be disqualified.

ROSES

**If the name of the rose is known, could it be clearly labelled
(Container maximum height 25cm)**

- A1 - FOUR ROSES, distinct varieties, staged singly
A2 - THREE ROSES, not necessarily distinct, staged singly
A3 - ONE ROSE
A4 - ONE CONTAINER OF SIX DECORATIVE ROSES, mixed colours
A5 - ONE CUT FLORIBUNDA ROSE
A6 - THREE CUTS OF FLORIBUNDA ROSES, staged singly, not necessarily distinct
A7 - ONE CONTAINER OF FLORIBUNDA ROSES, 6 stems, not necessarily distinct
A8 - ONE CUT MINIATURE ROSE
A9 - THREE CUTS MINIATURE ROSES. Different varieties, staged singly
A10 - ONE CUT OF AN OLD WORLD ROSE, named
A11 - ONE FULL BLOWN ROSE
A12 - ONE ROSE GROWN WITHIN THE DOOKIE DISTRICT



Ribbon & Trophy for Champion Rose Bloom in Show, to be chosen from all exhibits.

Donated by R & V Dickins in memory of Edna Batey.

Aggregate Trophy, donated by Ella Close in memory of Norman Close.

POT PLANTS

(Container maximum diameter 30cm. Plants must have waterproof saucer underneath)

- B13 - TWO POT PLANTS, two distinct varieties
B14 - ONE FLOWERING PLANT IN BLOOM, not mentioned elsewhere
B15 - ONE MAIDEN HAIR FERN
B16 - ANY OTHER TYPE OF FERN
B17 - ONE FOLIAGE PLANT
B18 - A BEGONIA IN A POT, in bloom
B19 - COLLECTION SUCCULENTS AND/OR CACTI,
growing in container
B20 - ONE SUCCULENT OR CACTI,
growing in container, one variety
B21 - A HANGING CONTAINER
B22 - ONE CONTAINER OF IVY
B23 - AN AZALEA IN A POT
B24 - AN ORCHID IN BLOOM
B25 - IVY GERANIUM



Aggregate Trophy donated by Dookie A&P Society.

AUSTRALIAN FLORA

(Exhibits not to be more than 46 cm in height above container.)

Stewards: Dianne Feldtmann, Helen Harker.

- C25 - ONE CUT OF CALLISTEMON
- C26 - THREE CUTS OF CALLISTEMON, staged singly, distinct varieties
- C27 - ONE CUT OF FLOWERING EUCALYPT
- C28 - THREE CUTS OF FLOWERING EUCALYPT, staged singly, distinct varieties
- C29 - ONE CUT OF GREVILLEA
- C30 - THREE CUTS OF GREVILLEA, staged singly, distinct varieties
- C31 - ONE CUT OF TREE OR SHRUB, not mentioned above
- C32 - THREE CUTS OF TREE OR SHRUB, not mentioned above, staged singly, distinct varieties
- C33 - ONE CUT OF GROUND COVER, to be displayed horizontally in a low, appropriate container
- C34 - ONE CUT OF TREE OR SHRUB, with the most attractive foliage
- C35 - ONE NATIVE POT PLANT
- C36 - THREE CUTS OF KANGAROO PAW, one container.

Aggregate Trophy donated in loving memory of Louis and Norah Serres
(Parents of Mikki Davidson)



CUT FLOWERS

- D37 - ONE CONTAINER LAVENDER, not more than 10 stems, not necessarily distinct
- D38 - ONE CONTAINER SWEET PEAS, not more than 10 stems
- D39 - ONE CONTAINER ICELAND POPPIES, not more than 10 blooms
- D40 - CONTAINER OF ANTIRRHINUM, 3 cuts
- D41 - ONE CONTAINER CARNATIONS, 3 blooms
- D42 - ONE CONTAINER FLOWERS, not elsewhere mentioned, excluding natives
- D43 - ONE CONTAINER OF MARGUERITES, mixed
- D44 - ONE CONTAINER GERANIUMS, 3 cuts, not necessarily distinct
- D45 - ONE CUT GERANIUM, single
- D46 - ONE CUT GERANIUM, double
- D47 - ONE CUT PELARGONIUM
- D48 - THREE FLORETS BEARDED IRIS, distinct varieties, staged singly
- D49 - ONE SPIKE BEARDED IRIS
- D50 - ONE SPIKE, ANY OTHER IRIS (not bearded)
- D51 - SIX PANSIES, distinct varieties, in one container
- D52 - THREE PANSIES, distinct varieties, in one container
- D53 - THREE CUTS FUCHSIA, staged singly
- D54 - ONE SPECIMEN BLOOM, SPIKE OR TRUSS, not roses or bearded iris
- D55 - COLLECTION OF SIX CUT FLOWERS, one cut of each, staged singly (roses not allowed)
- D56 - ONE CUT OF TREE OR SHRUB, not more than 46 cm (18") in height above container
- D57 - THREE CUTS OF TREE OR SHRUB, not more than 46 cm (18") in height above container
- D58 - ONE STEM OF PROTEA
- D59 - ONE SPIKE OF ORCHID



Aggregate Trophy donated by Dookie A&P Society.

Dookie Men's Shed

GARY GRAY 0458380357
DON BRYANT 0400386390

dookiemensshed@gmail.com

HARKER PAVILLION
DOOKIE RECREATIONAL RESERVE
EVERY FRIDAY MORNING



**FOR ALL YOUR
STEEL SUPPLIES**

**WE CAN
DELIVER**

NALINGA STEEL WILL CONTINUE TO USE & SUPPLY

AUSTRALIAN STEEL 
WHEREVER AVAILABLE & POSSIBLE

Stocking a LARGE range of FIRST & DOWNGRADE steel - Cut to order

Ph: 03 5828 9220
3090 Midland Hwy Nalinga VIC

NSR
nalinga
STEEL + ROOFING

sales@nalingasteel.com.au
www.nalingasteel.com.au

CLASS P - FLORAL ART

- Entries Close:** Wednesday 25th October at 5.00pm
Entry Fee: Non Members 50¢. Members Free.
Limit of 2 Entries per Person in any Section.
Staging: SEE PAGE 33 FOR STAGING TIMES
Judging: to commence at 9.00am
Stewards: Genevieve McKinley
Prizes: 1st - \$1.00, 2nd - 50¢,
Exhibits may be removed and prize money collected from 4.30pm onwards.
Champion Ribbon for Best Exhibit

RULES

- All exhibits to be those of amateurs only.
- A1 - A LINE ARRANGEMENT
A2 - DARE TO BE DIFFERENT
A3 - ARRANGEMENT IN A TEAPOT
A4 - "NATURE'S BOUNTY" - FLOWERS, FRUIT AND FOLIAGE
A5 - AN ARRANGEMENT OF FLOWERS, in any one colour
A6 - LEAVES AND/OR SUCCULENTS, a foliage arrangement in a suitable container
A7 - "MY WAY WITH ROSES", foliage allowed
A8 - REFLECTIONS
A9 - AN ARRANGEMENT OF FLOWERS AROUND A CANDLE, foliage allowed
A10 - MORE WOOD THAN FLOWERS
A11 - CHURCH OR HALLWAY ARRANGEMENT, no wider than 900mm
A12 - AN ARRANGEMENT OF SWEET PEAS
A13 - AN ARRANGEMENT OF MIXED FLOWERS, mantle arrangement, open to Dookie Organisations. 1st - \$2.50, 2nd - \$2.00, 3rd - 50¢.
A14 - "AUSTRALIANA", roadside arrangement
A15 - A SMALL BASKET OF FLOWERS. Basket with a handle to be no more than 25cm at its widest point
A16 - ARRANGEMENT OF FLOWERS in a box



NOVICE SECTION

(For those who have never won more than three first prizes in this section)

- B1 - AN ARRANGEMENT OF FLOWERS AROUND A CANDLE, foliage allowed
B2 - A LOW CONTAINER OF GERANIUMS OR PELARGONIUMS
B3 - ROADSIDE ARRANGEMENT
B4 - ARRANGEMENT OF FLOWERS in a box
B5 - AN ARRANGEMENT OF THREE FLOWERS with any foliage

Aggregate Trophy for most points in classes A1 - B5, donated by Dookie A&P Society.





YOUNGS & CO
REAL ESTATE

**Real Estate Agent
& Auctioneers**

Residential – Sales & Leasing

Commercial – Sales & Leasing

Rural – Sales & Leasing

Self-Storage Sheds

Clearing Sales Specialist

R.E.I.V. Real Estate Institute of Victoria

WWW.YOUNGSANDCO.COM.AU

123 Wyndham St. SHEPPARTON PH: 03 5820 8777

62 McLennan St. MOOROOPNA PH: 03 5825 4833

CLASS P - CHILDREN'S FLORAL ART

- Entries Close:** Wednesday 25th October at 5.00pm
Entry Fee: No Entry Fee
Limit of 2 Entries per Person in any Section.
Stewards: Joy Sims & Genevieve McKinley
Staging: SEE PAGE 33 FOR STAGING TIMES
Judging: to commence at 9.00am
Prizes: 1st - \$1.00, 2nd - 50¢
Exhibits may be removed and prize money collected from 4.30pm onwards



CHILDREN'S SECTION, 11 - 16 years

- C1 - A FLORAL SAUCER
- C2 - PRESSED FLOWER CARD
- C3 - A CONTAINER OF MIXED FLOWERS
- C4 - A SMALL ARRANGEMENT, 15cm maximum
- C5 - AN ARRANGEMENT OF ONE FLOWER, foliage and accessories allowed
- C6 - "AN AUSTRALIAN ANIMAL", made from flowers, fruit or vegetables. Exhibit must be presented on plate provided. Accessories and foliage allowed. Maximum height 30cm
- C7 - AN ARRANGEMENT OF NATIVE FLOWERS AND FOLIAGE, in a suitable container
- C8 - A CHILD'S HAT, decorated with fresh or artificial items
- C9 - SOMETHING I GREW

Aggregate Trophy. Donated by Mrs Margaret Feldtmann

CHILDREN'S SECTION, 7 - 10 years

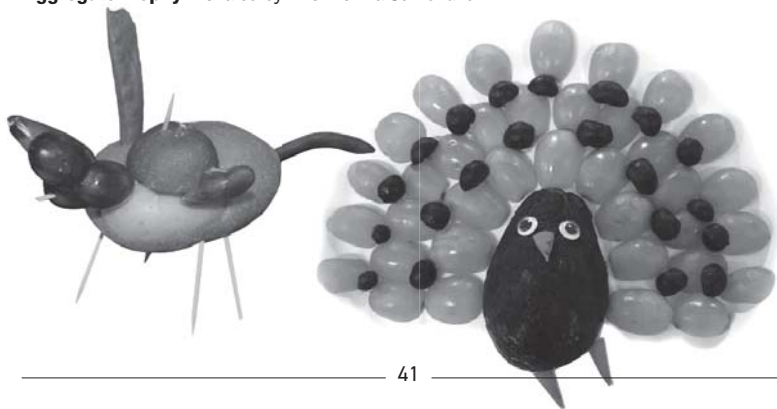
- D1 - PRESSED FLOWER CARD
- D2 - AN ARRANGEMENT IN A KITCHEN CONTAINER
- D3 - A POSY FOR TEACHER
- D4 - SOMETHING MADE FROM FRUIT AND/OR VEGETABLES. Exhibit must be presented on plate provided. Accessories and foliage allowed. Maximum height 30cm
- D5 - SOMETHING I GREW
- D6 - ARRANGEMENT OF ONE FLOWER, foliage and accessories allowed

Aggregate Trophy. Donated by Mrs Margaret Feldtmann

CHILDREN'S SECTION, 6 years and under

- E1 - SOMETHING MADE FROM FRUIT AND/OR VEGETABLES. Exhibit must be presented on plate provided. Accessories and foliage allowed. Maximum height 30cm
- E2 - BITS AND PIECES FROM THE GARDEN ARRANGED IN A MUG
- E3 - AN ARRANGEMENT OF ONE FLOWER, foliage and accessories allowed
- E4 - SOMETHING I GREW

Aggregate Trophy. Donated by Mrs. Norma Sutherland





ANKER SEED GRADING

Phone Darren
0488 700 884

1035 Love Road, Stewarton, Vic, 3725

Seed Protectants

We've got you covered

STIHL[®]
Authorized Dealer



STIHL SHOP SHEPPARTON

215 Numurkah Rd Shepparton

Ph: (03) 5820 9718

ShepStihl@haeusler.com.au

Sales, Service & Repair

CLASS Q - COOKERY, SECTION A

- Entries Close:** Wednesday 25th October, 5.00pm
Entry Fee: Non Members 50¢. Members Free.
Limit of 2 Entries per Person in any Section.
Staging: SEE PAGE 33 FOR STAGING TIMES
Judging: to commence at 9.00am
Stewards: Glenda Exton, Alison Exton.
Prizes: 1st - \$1.00, 2nd - 50¢
Exhibits may be removed and prize money collected from 4.30pm onwards
Champion Ribbon for Best Exhibit
Aggregate Trophy

RULES

- All exhibits in this section must be presented on white paper plates and in clear plastic bags
- No commercial mixtures allowed

- A1 - PLAIN SCONES (4)
A2 - MUFFINS (3) SAVOURY
A3 - MUFFINS (3) SWEET
A4 - QUEEN CAKES (4)
A5 - BAKED SLICES, 2 varieties, 3 of each, sizes 7.5cm (3") x 2.5cm (1")
A6 - UNBAKED SLICES, 2 varieties, 3 of each, sizes 7.5cm (3") x 2.5cm (1")
A7 - BISCUITS, uniced and unfilled, 2 varieties, 3 white and 3 brown
A8 - SHORTBREAD (4)
A9 - FRUIT LOAF, baked in a loaf tin
A10 - A SULTANA CAKE
A11 - PLAIN TEA CAKE
A12 - ORANGE CAKE, iced
A13 - CHOCOLATE CAKE, uniced
A14 - MARBLE CAKE, uniced
A15 - GINGER FLUFF, uniced, no filling
A16 - PLAIN SPONGE SANDWICH, uniced, no filling
A17 - BRAN LOAF. Recipe: 1 cup All Bran soaked in 1 cup milk, 1 cup SR Flour, 1 cup mixed fruit, 1/2 cup sugar, 1 tablespoon Golden Syrup. Mix all together and bake in a greased bar tin approximately 45 mins at 190°C.
A18 - FRUIT CAKE. 1st - \$2.00, 2nd - \$1.00, 3rd - 50¢
A19 - 250g (1/2lb) CURRANT CAKE. Recipe: 250g (8oz) butter, 250g (8oz) sugar, 285g (10oz) flour, 5 eggs, 60g (2oz) peel, 250g (8oz) currants, essence to taste. 1st - \$2.00, 2nd - \$1.00, 3rd - 50¢. 20cm tin approximately.
A20 - BOILED FRUIT CAKE
A21 - PLUM PUDDING
A22 - DECORATED PATTY/CUP CAKES (3)
A23 - HOME MADE BREAD, own choice, one loaf, not made in bread making machine
A24 - HOME MADE BREAD, own choice, one loaf, made in bread making machine
A25 - A BANANA CAKE
A26 - APPLE PIE - SWEET PASTRY
A27 - LUMBERJACK CAKE
A28 - AN ICED CAKE MADE BY A MAN, packet cake allowed
A29 - GLUTEN FREE CAKE
A30 - NOVELTY - DECORATED CHILD'S BIRTHDAY CAKE, accessories allowed

NOTE: Heavy cakes need to be placed on strong plates or foil covered boards.



 **Seed**

 **Fertilizer**

 **Agricultural Chemicals**

 **Lime & Gypsum**

 **Silage Inoculants**

 **Soil, Plant & Water Testing**

 **Qualified Agronomist available
for on-farm advice**

Tony Kelly (Agronomist)

Mobile 0427 311 307

www.advancedag.com.au

Telephone: (03) 5822 4862

A31 - THE VAS RICH FRUIT CAKE COMPETITION (OPEN TO ALL)

Entry Fee: \$1.00

Proudly sponsored by The Sultana Sisters

Prizes at Local Show Level: **First:** \$15.00, **Second:** \$7.00

Prizes at State Level:

First: \$200.00 Prize Money & VAS State Final Trophy

Second: \$100.00 Prize Money

Third: \$50.00 Prize Money



The following recipe is compulsory for all entrants.

Here's what you need:-

250g sultanas	1/3 cup sherry or brandy	250g soft brown sugar
250g chopped raisins	250g plain flour	1/2 teaspoon lemon essence
250g currants	60g self raising flour	OR finely grated lemon rind
125g chopped mixed peel	1/4 teaspoon grated nutmeg	1/2 teaspoon almond essence
90g chopped red glacé cherries	1/2 teaspoon ground ginger	1/2 teaspoon vanilla essence
90g chopped blanched almonds	1/2 teaspoon ground cloves	4 large eggs
	250g butter	

Here's what you do:-

Cut the fruit and almonds into 3-4 pieces and mix together all the fruits and nuts and sprinkle with the sherry or brandy. Cover and leave for at least 1 hour but preferably overnight.

Sift together the flours and spices. Cream together the butter and sugar with the essences. Add the eggs one at a time, beating well after each addition, and then alternately add the fruit and flour mixtures. Mix thoroughly. The mixture should be stiff enough to support a wooden spoon.

Place the mixture into a prepared tin **20cm square, straight sided, square cornered tin** and bake in a slow oven for approximately 3½ to 4 hours. Allow the cake to cool in the tin.

VAS Fruitcake Regulations

- An exhibitor having won at a Show, will bake another cake for entry in the Group Final; the winner will then be required to bake a further cake for the State Final at the next Royal Melbourne Show.
- An exhibitor having won at Show Level is not eligible to enter any other Show until after the Group judging, when, if not the winning entry, can compete further.
- An exhibitor is only eligible to represent one Group in the State Final.
- An exhibitor having won at Group Level cannot compete further until after the Royal Melbourne Show.
- Each cake entered must be the bona fide work of the exhibitor.
- If for any reason a winner is unable to compete at Group or State Final level then the second placegetter is eligible to compete.

CLASS Q - COOKERY, SECTION A CONT...

A32 - VAS LTD CARROT CAKE COMPETITION

Entry Fee: \$1.00

Prizes at Local Show Level: **First:** \$15.00, **Second:** \$7.00

State Final Prizes:

First: \$250.00 & VAS State Final Trophy

Second: \$100.00 **Third:** \$50.00



Proudly sponsored by



General Rules & Regulations

1. The entrant must follow the recipe and specifications provided.
2. Each cake entered must be the bona fide work of the exhibitor.
3. The VAS cake competition follows the three levels of competition: Show Level, Group Level and State Final.
4. An exhibitor having won at their local Show will bake another cake for the Group Final level and then the winner of the Group Final will bake another cake for the State Final at the Annual VAS Ltd Convention.
5. An exhibitor having won at Show Level is not eligible to enter any other Show until after the Group Final judging.
6. An exhibitor is only eligible to represent one Group in the State Final.
7. If for any reason a winner is unable to compete at Group or State Final level, then the second placegetter is eligible to compete.

Here's what you need:-

375g plain flour	2tsp baking powder
1½ tsp bicarb soda	2tsp ground cinnamon
½ tsp ground nutmeg	½ tsp allspice
2 tsp salt	345g castor sugar
375ml vegetable oil	4 eggs
3 medium carrots, grated (350 grams)	220g tin crushed pineapple, drained
180g pecan nuts crushed	

Here's what you do:-

1. Preheat the oven to 180C (160C fan), Grease a 23cm (9 inch) round cake tin and line with baking paper.
2. Sift the dry ingredients together into a bowl. In a separate bowl, beat the eggs and oil, then add to the dry ingredients. Mix well then add the carrots, crushed pineapple and pecans. Mix to form a smooth batter and pour into the cake in.
3. Bake for approximately 90 - 100 minutes.
4. Remove from the oven and allow to cool for 10 minutes in the tin on a wire rack. Upend and allow to cool on the wire rack.

NOVICE

(For those who have never won more than three first prizes in any cooking section)

A33 - BAKED SLICES, 2 varieties, 3 of each, sizes 7.5cm (3") x 2.5cm (1")

A34 - UNBAKED SLICES, 2 varieties, 3 of each, sizes 7.5cm (3") x 2.5cm (1")

A35 - SHORTBREAD (4)

A36 - CHOCOLATE CAKE, uniced

A37 - A PACKET CAKE MADE BY A MAN, label to be displayed with brand

A38 - HOME MADE BREAD, one loaf, own choice, made in bread making machine

A39 - PLAIN PIKELETS (3)

A40 - A DECORATED PATTY/CUP CAKE

A41 - PLAIN SPONGE SANDWICH, uniced, no filling

CLASS Q - CHILDREN'S COOKERY

- Entries Close:** Wednesday 25th October, 5.00pm
Entry Fee: No Entry Fee.
Limit of 2 Entries per Person in any Section.
Staging: SEE PAGE 33 FOR STAGING TIMES
Judging: to commence at 9.00am
Steward: Marjorie Shields, Brianna Shields.
Prizes (B2 - B19): 1st - \$1.00, 2nd - 50¢
Exhibits may be removed and prize money collected from 4.30pm onwards

CHILDREN, 18 years and under

B1 - VAS LTD JUNIOR CARROT & DATE MUFFINS

Entry Fee: \$1.00

General Rules & Regulations – See A32, page 48.

The entrant must be under 18 years on the day of their local show.

Prizes at Local Level: **First:** \$5.00, **Second:** \$2.00

Prizes at State Final Level: **First:** \$250.00 Prize Money & VAS State Final Trophy

Second: \$100.00 Prize Money, **Third:** \$50.00 Prize Money

Here's what you need:-

2 ½ cups self-raising flour	1 tbsp orange marmalade	1 tsp ground cinnamon
1 cup canola oil	¼ tsp ground nutmeg	2 eggs, lightly beaten
1 cup brown sugar (firmly packed)	¾ cup orange juice	1/3 cup chopped pitted dates
1 cup reduced fat milk	1 cup coarsely grated carrot	

Here's what you do:-

1. Pre-heat oven to 190°C (moderately hot).
2. Line a 12 hole muffin pan with round paper muffin cases - Classic white muffin cases size (35mm Height x 90mm Wide x 50mm Base).
3. Sift dry ingredients into a large bowl, stir in dates and carrots. Then add the combined marmalade, oil, eggs, juice and milk. Mix until just combined.
4. Spoon mixture evenly into muffin paper cases in muffin pan.
5. Cook for 20 minutes. To test if muffins are cooked insert cake skewer, if it comes out clean the muffins are ready.
6. Stand muffins in pan for 5 minutes before removing to cool.
7. Show Entries: Four (4) muffins per plate.

CHILDREN, 16 years and under

- B2 - MUFFINS (3)
B3 - PLAIN SCONES (4)
B4 - PLATE OF 4 UNICED BISCUITS, one variety, not shortbread mixture or Anzac mixture
B5 - TEA CAKE
B6 - PLAIN SPONGE SANDWICH, no filling and uniced
B7 - A CHOCOLATE CAKE, uniced
B8 - SLICE, 1 variety, 3 pieces. Uncooked 7.5cm x 2.5cm
B9 - A DECORATED CAKE
B10 - PLATE OF 3 CHOCOLATE CRACKLES
B11 - 2 MINI PIZZAS, maximum 10cm

Aggregate Trophy. Donated by Dookie Day Care.

Proudly sponsored by



CLASS Q - CHILDREN'S COOKERY CONT...

CHILDREN, 12 years and under

- B13 - TRUFFLES (4)
- B14 - EDIBLE NECKLACE
- B15 - A DECORATED BOUGHT BISCUIT, on small paper plate 18cm or less
- B16 - A PLATE OF 4 UNICED BISCUITS, one variety, not shortbread mixture
- B17 - A PLATE OF 3 CHOCOLATE CRACKLES
- B18 - A DECORATED PATTY/CUP CAKE
- B19 - LUNCH BOX

Aggregate Trophy Donated by Una Feldtmann.

CHILDREN, 8 years and under

- B20 - TRUFFLES (4)
- B21 - A DECORATED BOUGHT BISCUIT, on small paper plate 18cm or less
- B22 - A DECORATED CUP CAKE
- B23 - EDIBLE NECKLACE

Aggregate Trophy Donated by Marjorie Shields.



CLASS R - JAMS, JELLIES & PRESERVES

Entries Close:

Wednesday 25th October at 5.00pm

Entry Fee:

Non Members 50¢. Members Free.

Limit of 2 Entries per Person in any Section.

Staging:

SEE PAGE 33 FOR STAGING TIMES

Judging:

to commence at 9.00 am

Stewards:

Glenda Wilson, Ken Wilson.

Prizes:

1st - \$1.00, 2nd - 50¢

Exhibits may be removed and prize money paid from 4.30pm onwards.

Trophy & Champion Ribbon For Best Exhibit

Aggregate Trophy

RULES

- All entries must be produced by the exhibitor in the last season
- Jars to be labelled.
- Paraffin wax to be removed from jars. Lids to be loosened.
- Jams & jellies to be in jars not less than 250g

NOVICE SECTION

For exhibitors who have never won a 1st prize at any show

- 1 - LEMON BUTTER
- 2 - JAR OF JAM, own choice
- 3 - JAR OF MARMALADE, own choice
- 4 - BOTTLE OF SAUCE, any variety
- 5 - JAR OF BOTTLED FRUIT, own choice

JELLIES

- 6 - JAR OF JELLY
- 7 - LEMON BUTTER

JAMS

- 8 - APRICOT JAM
- 9 - BERRY JAM
- 10 - PLUM JAM
- 11 - QUINCE JAM
- 12 - FIG JAM
- 13 - JAR OF JAM,
Fruit/fruits not mentioned elsewhere
Must be labelled
- 14 - COLLECTION OF JAMS,
3 varieties (excluding marmalade)

MARMALADES

- 15 - ORANGE PULP MARMALADE
- 16 - GRAPEFRUIT MARMALADE, pulp
- 17 - THREE FRUITS MARMALADE
- 18 - COLLECTION OF MARMALADES,
3 varieties, citrus fruits only

PICKLES, SAUCES & VINEGARS

- 19 - VEGETABLE PICKLES, 1 jar
- 20 - Jar of GREEN TOMATO PICKLES
- 21 - CHUTNEY, 1 variety
- 22 - TOMATO RELISH, 1 variety
- 23 - VEGETABLE RELISH, 1 variety
- 24 - TOMATO SAUCE, 1 bottle
- 25 - SAUCE, any other variety
- 26 - HERB VINEGAR, 1 bottle

PRESERVES

- 27 - COLLECTION OF 5 ITEMS
(1 jam, 1 jelly, 1 preserve, 1 sauce, 1 pickle)
- 28 - BOTTLE OF BEETROOT PRESERVED
- 29 - BOTTLE OF TOMATOES
- 30 - BOTTLE OF PEACHES
- 31 - BOTTLE OF HALF PEARS
- 32 - BOTTLE OF APRICOTS
- 33 - COLLECTION OF PRESERVED FRUITS,
to be put in 4 bottles. Tomatoes permissible
- 34 - BOTTLE OF FRUIT OF YOUR CHOICE
- 35 - SUNDRIED TOMATOES
- 36 - JAR OF HONEY

HOME BREW

- 37 - BOTTLE OF CIDER
- 38 - BOTTLE OF GINGER BEER
- 39 - BOTTLE OF STOUT
- 40 - BOTTLE OF ALE
- 41 - BOTTLE OF LAGER

CLASS S - NEEDLEWORK & CRAFT

Entries Close:	Wednesday 25th October, 5.00pm
Entry Fee:	Non Members 50¢. Members Free. Limit of 2 Entries per Person in any Section.
Staging:	SEE PAGE 33 FOR STAGING TIMES
Judging:	to commence at 9.00am
Steward Section A:	Pauline Ryan
Stewards Section B:	Liz Feldtmann, Yvonne Baker
Prizes:	1st prize - \$1.00, 2nd prize - 50¢ Exhibits may be removed and prize money collected from 4.30pm onwards. Champion Ribbon and Trophy for Best Article in Section A. Donated in loving memory of Alma & George Davidson. Aggregate Trophy for Section A. Donated by the Stedman Family. Champion Ribbon and Trophy for Best Article in Section B (excl. B22) Aggregate Trophy for Section B (excl. B22)

RULES

- All exhibits must be unwashed and completed within the last three years
- No exhibit can be entered in any section in which it has been awarded a 1st Prize at any previous show of the Society.
- Section tickets to be attached to all exhibits with small safety pins.
- Late entries will not be accepted on the morning of the Show.
- All mounted exhibits need to be framed and backed.

SECTION A

- A1 - A PATCHWORK QUILT, machine sewn, professionally quilted
A2 - A PATCHWORK QUILT, by maker
A3 - A SMALL ARTICLE OF PATCHWORK, no larger than 60cm, machine or hand sewn
A4 - **VAS Ltd PATCHWORK COMPETITION.** A piece of patchwork machine pieced and machine quilted no more than 1 metre on any one side. Machine/hand pieced and quilted by exhibitor only. Minimal embellishments. Small amount only, not to overpower patchwork. See regulations Page 53.
Entry Fee: \$1.00
Prize at Local Show: **First:** \$10.00, **Second:** \$5.00
Prizes at State Final: **First:** \$300.00 Spotlight Voucher & VAS State Final Trophy
Second: \$150.00 Spotlight Voucher, **Third:** \$50.00 Spotlight Voucher
- A5 - A QUILT, made by any other technique
A6 - AN ARTICLE OF LONG STITCH, mounted
A7 - AN ARTICLE OF CROSS STITCH, worked area to be 20cm or less
A8 - AN ARTICLE OF CROSS STITCH, worked area to be more than 20cm
A9 - A PIECE OF WORK, incorporating mixed stitches
A10 - THREE DISTINCT SMALL ARTICLES, suitable for Christmas presents
A11 - A KNITTED ARTICLE, not mentioned elsewhere, excluding novelty yarns
A12 - HAND KNITTED ARTICLE, using novelty yarns
A13 - HAND CROCHET ARTICLE, wool or substitute, not cotton
A14 - ARTICLE OF BABY WEAR, knitted
A15 - ARTICLE OF BABY WEAR, crochet
A16 - HAND MADE CROCHET ARTICLE, cotton
A17 - SCARF
A18 - CHILD'S HAND KNITTED JUMPER OR CARDIGAN, wool or woollen substitute, suitable for a child under 12 years. Machine bands allowed
A19 - ADULT'S HAND KNITTED JUMPER OR CARDIGAN, wool or woollen substitute. Machine bands allowed



CLASS S - NEEDLEWORK & CRAFT

A20 - **VAS Ltd HANDKNITTING COMPETITION.** A HAND KNITTED BLANKET NOT MORE THAN 1 METRE ON ANY ONE SIDE. Knitted in one piece, minimum of 5 different stitches (patterns). Each exhibit must be made from pure wool/wool blend of any ply. Exhibitor to attach label from wool used or receipt from the woollen mill. See regulations below.

Entry Fee: \$1.00

Prize at Local Show: **First:** \$10.00, **Second:** \$5.00

Prizes at State Final: **First:** \$300.00 Spotlight Voucher & VAS State Final Trophy

Second: \$150.00 Spotlight Voucher, **Third:** \$50.00 Spotlight Voucher

A21 - CHRISTMAS DECORATION

A22 - A BEAR

A23 - A SOFT TOY

A24 - COATHANGER

A25 - CUSHION

A26 - AN ARTICLE OF RIBBON EMBROIDERY

A27 - ONE PIECE OF CRAFT, not elsewhere mentioned, excluding needlework

A28 - A PIECE OF CRAFT, not elsewhere mentioned, incorporating needlework

A29 - HANDSPUN WOOL, 2 skeins, minimum 50 gms, 2 different shades

A30 - EXHIBIT FROM HANDSPUN WOOL, woven, knitted or crochet

A31 - A PAGE OF SCRAPBOOKING, presented in a plastic pocket and displayed on a stand

A32 - ONE ARTICLE OF BEADWORK

A33 - A HAND DESIGNED CARD

A34 - **VAS Ltd CROSS STITCH COMPETITION.** THE EXHIBIT TO BE AN ARTICLE OF CROSS STITCH OF ANY TYPE up to 60cm on all sides, including frame. Minimal embellishments allowed. See regulations below.

Entry Fee: \$1.00

Prize at Local Show: **First:** \$10.00, **Second:** \$5.00

Prizes at State Final: **First:** \$300.00 Spotlight Voucher & VAS State Final Trophy

Second: \$150.00 Spotlight Voucher, **Third:** \$50.00 Spotlight Voucher

ARTWORK

N.B. Entries must be staged on Thursday prior to show, between 4.00pm and 6.00pm.

A35 - A PAINTING, any medium

A36 - A DRAWING, any medium

A37 - ARTWORK IN ANOTHER MEDIUM, e.g. print, collage or mixed media

VAS REGULATIONS for A4, A20, A34, B2, B23 and B25.

1. Each exhibit entered must be the bona fide work of the exhibitor.
2. Professionals are not eligible, which is defined as someone that works professionally or derives the greater percentage of their income in that craft, art form or technique.
3. All work is to have been completed in the last twelve (12) months prior to its entry at a local Show.
4. The competition follows the three levels of competition: Show Level, Group Level and State Level.
5. An exhibit having won at a Show will compete at the 2022 Group Final. The winning exhibit at the Group Final will then compete in the State Final at the 2022 Royal Melbourne Show.
6. An exhibitor having won at Show Level is not eligible to enter the VAS Competition at any other Show until after the Group Final judging.
7. An exhibitor is only eligible to represent one Group in the State Final.
8. If for any reason a winner is unable to compete at Group or State Final Level, then the second placegetter is eligible to compete.
9. An exhibit having won at State Final is no longer eligible to compete in the competition.
10. If an exhibitor is found to have won more than one Group Final the exhibitor must forfeit/refund all prizes and will be disqualified from exhibiting for 12 months.
11. Crochet/knitting competition - exhibitors to attach label from wool used or receipt from woollen mill.

SECTION B

- B1 - A PIECE OF HAND EMBROIDERY, not wool
- B2 - **VAS Ltd HAND EMBROIDERY COMPETITION**. AN ARTICLE OF HAND EMBROIDERY, any type, excluding cross stitch (see regulations Page 53).
Entry Fee: \$1.00
 Prize at Local Show: **First:** \$10.00, **Second:** \$5.00
 Prizes at State Final: **First:** \$300.00 Spotlight Voucher & VAS State Final Trophy
Second: \$150.00 Spotlight Voucher, **Third:** \$50.00 Spotlight Voucher
- B3 - AN ARTICLE OF MACHINE EMBROIDERY
- B4 - A PIECE OF WOOL EMBROIDERY
- B5 - AN ARTICLE OF HARDANGER
- B6 - AN ARTICLE OF SMOCKING
- B7 - DRESSED DOLL OR TOY
- B8 - PAIR OF TODDLER'S OVERALLS, suitable for a child up to 2 years
- B9 - AN APRON, machine sewing allowed
- B10 - CHILD'S PLAY FROCK OR ONE PIECE SUN SUIT, cotton material, hand sewn hem allowed
- B11 - CHILD'S FROCK, hand sewn hem allowed
- B12 - LADY'S FROCK, hand sewn hem allowed
- B13 - A SMALL QUILTED ARTICLE
- B14 - AN ARTICLE MADE FROM MATERIAL SCRAPS
- B15 - SHIRT OR BLOUSE
- B16 - GARMENT IN STRETCH FABRIC
- B17 - A PIN CUSHION
- B18 - HAT MADE FROM RECYCLED MATERIAL
- B19 - AN OVEN MITT
- B20 - A BAG
- B21 - A COLLECTION OF 3 KNITTED SQUARES, 15 x 15cm, knitted in 8ply wool/acrylic, to be donated to the Show Society. All entries will be sewn into a blanket and donated to charity.
- B22 - A COLLECTION OF 3 CROCHETED SQUARES, 15 x 15cm, crocheted in 8ply wool/acrylic, to be donated to the Show Society. All entries will be sewn into a blanket and donated to charity.
- B23 - **VAS Ltd SEWING COMPETITION** Proudly Sponsored by Spotlight.
 WEARABLE VEST, FULLY LINED WITH EMBELLISHMENTS ALLOWED. Sewn by machine. May be hand finished. Knitted/Crocheted items not acceptable. See regulations on page 53.
Entry Fee: \$1.00
 Prizes at Local Show: **First:** \$10.00, **Second:** \$5.00
 Prizes at State Final: **First:** \$300.00 Spotlight Voucher & VAS State Final Trophy
Second: \$150.00 Spotlight Voucher, **Third:** \$50.00 Spotlight Voucher
- B24 - SIX ARTICLES FROM ONE ORGANISATION, from the list:
- | | | |
|--------------------------|------------------------------------|-----------------|
| 1 Piece of Needlework | 1 Craft | 1 Jar of Relish |
| 1 Piece of Sewing | 1 Jar of Jelly/Jam | |
| 1 Uniced Cooking Exhibit | 1 Photograph Mounted on Black Card | |
| 1 Preserve | 1 Piece of Knitting/Crocheting | |
- List of articles to be supplied with each entry. Open to all organisations. Only one entry per organisation. Jars to be labelled. Each article will be awarded points out of 10 for quality.
 Entry fee: 50¢. 1st - \$5.00, 2nd - \$2.50, 3rd - \$1.00.
- B25 - **VAS Ltd CROCHET COMPETITION** A 3D Item, no larger than 50cms on any one side made from pure wool/wool blend of any ply. See page 53 for rules and regulations.
Entry Fee: \$1.00
 Prize at Local Show: **First:** \$10.00, **Second:** \$5.00
 Prizes at State Final: **First:** \$300.00 Spotlight Voucher & VAS State Final Trophy
Second: \$150.00 Spotlight Voucher, **Third:** \$50.00 Spotlight Voucher



SPOTLIGHT

LEATHER - OPEN

- B26 - BELT
- B27 - STAMPED ARTICLE
- B28 - CARVED ARTICLE
- B29 - ANY OTHER ARTICLE

LEATHER - NOVICE

- B30 - BELT
- B31 - UNDER 16 ANY ARTICLE
- B32 - CARVED ARTICLE
- B33 - ANY OTHER ARTICLE



ROE & COOK

PLUMBERS

masterplumbers

Expert. Committed. Professional.

Servicing the local area since 1953.

- Domestic, commercial and rural plumbing
- Hot water service installations
- Septic tank installations
- Waste water treatment plants
- Drain camera inspections
- Pump sizing, sales and repairs
- Solar pump specialists
- Poly tanks, pipe and fittings



Mono™



ROE & COOK PLUMBERS

703A Midland Highway, Shepparton East 3631

Phone (03) 5829 2506 • Fax (03) 5829 2632

CLASS S - JUNIOR NEEDLEWORK & CRAFT

Entries Close:	Wednesday 25th October, 5.00pm
Entry Fee:	Non Members 50¢. Members Free. Limit of 2 Entries per Person in any Section.
Staging:	SEE PAGE 33 FOR STAGING TIMES
Judging:	to commence at 9.00am
Stewards:	Una Feldtmann, Trevor Feldtmann.
Prizes:	1st Prize - \$1.00, 2nd Prize - 50¢ Trophy for Best Article Donated by Dookie A&P Society Aggregate Trophy Donated by Dookie A&P Society Exhibits may be removed and prize money collected from 4.30pm onwards.

18 YEARS AND UNDER

- C1 - A PIECE OF CROSS STITCH
- C2 - ONE PIECE OF NEEDLEWORK
- C3 - A MACHINE MADE GARMENT
- C4 - ONE PIECE OF MACHINE APPLIQUE
- C5 - A SOFT TOY
- C6 - DECORATIVE TOY or DECORATED TOY
- C7 - ONE PIECE OF CRAFT, incorporating needlework
- C8 - A DECORATIVE CUSHION
- C9 - AN ARTICLE OF PATCHWORK
- C10 - AN ARTICLE OF SCRAPBOOKING
- C11 - A PIECE OF LONGSTITCH, mounted
- C12 - A DECORATED BAG
- C13 - A HAND DESIGNED CHRISTMAS CARD
- C14 - A DECORATED BOOT

12 YEARS AND UNDER

- C15 - AN ARTICLE OF KNITTING
- C16 - AN ARTICLE OF HAND SEWING/NEEDLEWORK
- C17 - A HAND DESIGNED CARD
- C18 - AN ARTICLE MADE BY MACHINE
- C19 - A DECORATED BOX no bigger than 15 x 15cm
- C20 - BOOKMARK

10 YEARS AND UNDER

- C21 - A FRIENDSHIP BRACELET
- C22 - A POM POM



CLASS U - SCHOOLWORK

- Entries Close:** Wednesday 25th October, 5.00pm. **NO LATE ENTRIES WILL BE ACCEPTED**
Entry Fee: No Entry Fee
Staging: All exhibits in School Section must be delivered to the George Batey Pavilion between 4.00pm and 5.30pm on the Thursday night prior to the Show. Section Tickets must be attached to exhibits.
Judging: Friday prior to show.
Stewards: One steward from each school.
Co-Ordinators: Sarah Chaplin, Heather Waldron
Prizes: 1st - \$1.00, 2nd - 50¢
Exhibits may be removed and prize money paid from 4.30pm onwards.

ARTWORK any medium

- 1 - PRE-SCHOOL BOYS
- 2 - PRE-SCHOOL GIRLS
- 3 - PREP BOYS
- 4 - PREP GIRLS
- 5 - BOYS YEAR 1
- 6 - GIRLS YEAR 1
- 7 - BOYS YEAR 2
- 8 - GIRLS YEAR 2
- 9 - BOYS YEAR 3
- 10 - GIRLS YEAR 3
- 11 - BOYS YEAR 4
- 12 - GIRLS YEAR 4
- 13 - BOYS YEAR 5
- 14 - GIRLS YEAR 5
- 15 - BOYS YEAR 6
- 16 - GIRLS YEAR 6
- 17 - YEAR 7
- 18 - YEAR 8
- 19 - YEAR 9
- 20 - YEAR 10
- 21 - YEAR 11
- 22 - YEAR 12

CRAFTWORK

- 23 - PRE-SCHOOL BOYS
- 24 - PRE-SCHOOL GIRLS
- 25 - PREP BOYS
- 26 - PREP GIRLS
- 27 - BOYS YEAR 1
- 28 - GIRLS YEAR 1
- 29 - BOYS YEAR 2
- 30 - GIRLS YEAR 2
- 31 - BOYS YEAR 3
- 32 - GIRLS YEAR 3
- 33 - BOYS YEAR 4
- 34 - GIRLS YEAR 4
- 35 - BOYS YEAR 5
- 36 - GIRLS YEAR 5
- 37 - BOYS YEAR 6
- 38 - GIRLS YEAR 6
- 39 - YEAR 7 *needlework excluded*
- 40 - YEAR 8 *needlework excluded*
- 41 - YEAR 9 *needlework excluded*
- 42 - YEAR 10 *needlework excluded*
- 43 - YEAR 11 *needlework excluded*
- 44 - YEAR 12 *needlework excluded*

TRADECRAFT

- 45 - YEARS 7 – 9, any article made of wood or metal
- 46 - YEARS 10 – 12, any article made of wood or metal
- 47 - YEARS 7 – 9, any handmade trade item – any material other than wood or metal
- 48 - YEARS 10 – 12, any handmade trade item – any material other than wood or metal

A DECORATED EGG

- 49 - PRE-SCHOOL
- 50 - PREP
- 51 - YEAR 1
- 52 - YEAR 2
- 53 - YEAR 3
- 54 - YEAR 4
- 55 - YEAR 5
- 56 - YEAR 6

COLOURING COMPETITION

(Limit one entry per child. Picture may be obtained from participating schools or from Show Secretary)

- 57 - 5 YEARS & UNDER
- 58 - 6-7 YEARS
- 59 - 8-9 YEARS
- 60 - 10-12 YEARS

LEGO COMPETITION

Best Lego construction no bigger than 30cm x 30cm. Must be designed by the builder and not from Lego instructions or books – must be stable or presented on a tray.

- 61 - PREP – YEAR 2
- 62 – YEAR 3 – YEAR 4
- 63 – YEAR 5 – YEAR 6

A HANDWRITTEN POEM

Composed by the Entrant.

- 64 - YEAR PREP
- 65 - YEAR 1
- 66 - YEAR 2
- 67 - YEAR 3
- 68 - YEAR 4
- 69 - YEAR 5
- 70 - YEAR 6

THE GLADSTONE



DOOKIE

*After the Dookie Show...
Come on down to
the Gladstone*

Wednesday & Thursday open at 4pm
(Kitchen opens at 6pm)

Friday, Saturday & Sunday open at 11.30am
(Kitchen opens at 12 noon)

*PROUD SPONSORS OF THE
OPEN PHOTOGRAPHY*

Book a table and stay for dinner!

- DINING • PRIVATE FUNCTIONS • JUKEBOX
- OUTDOOR ENTERTAINING AREA

BOOKINGS ESSENTIAL

Mary Street Dookie (In Main Street)

PH 03 5828 6237

CLASS V - PHOTOGRAPHY

Entries Close: Wednesday 25th October, 5.00pm

Entry Fee: Open Section: \$1.00
 Novice Section: Non Member 50¢, Members Free.
 Junior Section: Non Member 50¢, Members Free.
 Limit of 2 Entries per Person in this Section.

Staging: To be delivered to the Dookie Community Centre between 4.00pm - 5.30pm on Thursday prior to Show Day.

Judging: Friday prior to Show Day

Prizes: Open: 1st - \$5.00, 2nd - \$2.00: Novice & Junior: 1st - \$1.00, 2nd - 50¢
 Exhibits may be removed and prize money collected from 4.30pm onwards
Open Champion Photo. Trophy donated by Gladstone Hotel
Novice Champion Photo. Trophy donated by K. & G. Wilson
Junior Champion Photo. Trophy donated by DOW Engineering



RULES

- The Society will take all care, but will not be responsible for any loss or damage to the exhibits
- All exhibits are at the sole risk of the exhibitor
- All photos MUST be mounted on BLACK card or BLACK cardboard with no more than a 4cm border
- Stewards have the right to reallocate photographs to the appropriate section
- Name and address are to be placed on the back of the mount board
- Exhibit ticket to be attached to the front of the mounting
- Entries limited to 2 per person per category
- All photos must be the original work of the exhibitor and may be computer enhanced, but no computer generated images accepted.

OPEN SECTION

Prints must be at least 5" x 7" and no larger than 12" x 18"

	Black & White or Monochrome	Colour
Landscape – land based scenery	1	2
Waterscape – sea, lakes or rivers scenery	3	4
Still life	5	6
People/portrait – including self portrait	7	8
Fauna/animals – any animals, including pets	9	10
Flora – flowers and/or plants	11	12
Manmade – architecture/structure machinery	13	14
Sports/action – activities, photo journalistic		15*
Creative – digitally enhanced, artistic or surreal		16*
Macro – close up/larger than life size		17*
Night photography – including night exposure		18*
Panorama – a number of joined photos		19*
Any other subject	20	21
VAS Ltd Photography Competition		22*
Subject: "Animal/s in Action"		

**Black & White or Colour*

AAA WOOLBUYERS

ABN 39 138 959 145

**36 Wanganui Road
SHEPPARTON
5821 7855**

**OBLIGATION FREE
QUOTE
IN YOUR SHED**

*WE BUY 1 FLEECE OR A WHOLE CLIP
PROMPT SERVICE AND PAYMENT*

**PHONE HAYDEN OR GRANT
03 5821 7855**

**OPEN Monday - Friday
9.00 a.m. – 4.00 p.m.**

NOVICE SECTION

To have won no more than 3 firsts at an Agricultural Show, or doesn't usually exhibit/compete within a camera club

Colour or Black and White

Prints must be at least 5" x 7" and no larger than 12" x 18"

Landscape/waterscape	23
Sunrise/sunset	24
Still life	25
Sport/action	26
People/portrait (Try generational: ie, Pa, Son and Grandson)	27
Pets/animals	28
Flora – flowers and/or plants	29
Manmade, eg. buildings, machinery	30
Macro	31
Nighttime Photography	32
Panorama – Not phone enhanced	33
Dookie life	34
Previous Dookie Show	35
Any other subject	36

JUNIOR SECTION

No Entry Fee. Prints must be at least 6" x 4" (snapshot) and no larger than 8" x 10"

	10 years and under	11 years to 16 years
Landscape/nature	37	47
Sport/action	38	48
Family/friends	39	49
Pets/animals	40	50
Plants	41	51
A Selfie	42	52
Funny photo	43	53
Dookie life	44	54
Previous Dookie Show	45	55
Any other subject	46	56
VAS Ltd Photography Competition		57*
Subject: "Animal/s in Action"		

**Competitors to be 16 years and under on the day of their local show.*

VAS Regulations for V22 and V57

1. An exhibitor may represent only one Society at Group Level and one Group at State Level.
2. An exhibit may only win one Group Final in a show season, should the same article be entered again and found to have already won a Group Final in the same show season, the exhibitor must return the prize money and will be disqualified from exhibiting for 12 months.
3. The Goulburn Valley/Riverina winner of the current Show will compete as a finalist in the following State Final at the next Royal Melbourne Show.
4. An item having won a State Final is no longer eligible to compete in the competition.
5. Each item entered must be the bona fide work of the exhibitor.
6. Unframed.
7. Print no larger than 20 x 30cm. Must be mounted (mount no larger than 3cm).
8. Professional photographers are not eligible.



Phillips

CELLARS & REGIONAL WINE CENTRE

- *Over 45 Local Wines*
- *Home Brew & Home Winemaking Supplies*
- *Beer & Spirits*
- *Party Orders welcome*

Paul Phillips

1 19 Corio Street Shepparton 3630

PH: (03) 5821 2051

www.phillipscellars.com.au

contact@phillipscellars.com.au

9. If for any reason a winner is unable to compete at Group or State Final level, then the second place getter is eligible to compete.
10. A person will not be permitted to win at more than one Show within the State in any one Show year. Persons not adhering to this rule will be required to forfeit/refund prize money.
11. All work is to have been completed within the last twelve (12) months.
A photograph having won this section at the Dookie Show will compete at the Goulburn Valley/Riverina Group Final. The winning exhibit of the Group Final will then compete at the State Final as part of the next Royal Melbourne Show.

Open Competition (V22)

PRIZES

State Final	First Prize	\$70 Prize Money & VAS State Final Trophy donated by VASL
	Second Prize	\$20 Prize Money
	Third Prize	\$10 Prize Money

Junior Competition (V57)

PRIZES

State Final	First Prize	\$30 Prize Money & VAS Final Trophy
	Second Prize	\$15 Prize Money
	Third Prize	\$10 Prize Money

CLASS W - WINE

Entries Close:

Entry Fee: \$15.00

Judging: TBA

Awards Dinner at the Shepparton Golf Club,
in conjunction with GOTAFE Masterclass series

Head Judge: Simon Killeen **Chairman:** Paul Phillips

To be judged prior to show day

For further details and entry forms, contact
Phillips Cellars Regional Wine Centre on 5821 2051

RULES

- All entries must be current releases only
- 2 bottles of wine to be provided for each entry

1 - SHIRAZ

2 - CABERNET SAUVIGNON

3 - MERLOT & MERLOT BLENDS
- Any wine that includes Merlot

4 - OTHER RED VARIETIES/BLENDS
- All red wines excluding Shiraz only, Cab Sauv only,
Merlot and Merlot Blends or Sparkling Reds

5 - CHARDONNAY

6 - OTHER WHITE VARIETIES/BLENDS
- All white wines excluding Chardonnay only and
Sparkling Whites

7 - SPARKLING RED/WHITE

Assisted by **"Phillips Cellars and Regional Wine Centre"** and **"GOTAFE"**.

DOOKIE A&P SOCIETY

Year	President	Secretary	Treasurer
1958	McCormack, Neil	Clark, Ray E.	Hickey, W. E.A.
1959	McCormack, Neil	Milson, Jack	Curtis, E. (Ted)
1960	McRorie, Alan	Milson, Jack	Curtis, E. (Ted)
1961	Moylan, Matt	Milson, Jack	Curtis, E. (Ted)
1962	Fish, Newton	Fish, Margaret	Curtis, E. (Ted)
1963	Fish, Newton	Feldtmann, Margaret	Curtis, E. (Ted)
1964	Batey, George	Feldtmann, Margaret	Curtis, E. (Ted)
1965 - 1966	Batey, George	Wallace, Beryl	Curtis, E. (Ted)
1967	Hooper, C. A.	Missen, Ron	Curtis, E. (Ted)
1968	Hooper, C. A.	Missen, Ron	Ryan, Frank
1969 - 1971	Batey, George	Missen, Ron	Ryan, Frank
1972 - 1973	Batey, George	Missen, Ron	Ferris, Edward (Ted)
1974 - 1975	Batey, George	Sayers, Wilma	Lingwood, John
1976 - 1977	Batey, George	Missen, Ron	Lingwood, John
1978 - 1981	Batey, George	Missen, Ron	Peel, Barry
1982 - 1984	Batey, George	Missen, Ron	Fuller, Allan
1985	Batey, George	Smith, Anne	Fuller, A./McCracken, D.
1986	Feldtmann, Ian	Shields, Heather	McCracken, Don
1987	Feldtmann, Ian	McKenzie, Bev	McCracken, Don
1988	Feldtmann, Ian	McKenzie, Bev	Gamble, Jim
1989	Feldtmann, Ian	McKenzie, Bev	Harmer, Lynne
1990 - 1992	Feldtmann, Ian	Harrington, Jacinta	Harmer, Lynne
1993 - 1995	Feldtmann, Max	Harrington, Jacinta	Ludeman, Tracey
1996 - 1997	Feldtmann, Max	Harrington, Jacinta	Harrington, Jacinta
1998 - 2000	Graham, Alex	Harrington, Jacinta	Feldtmann, Brian
2001 - 2002	Graham, Alex	Harrington, Jacinta	Ludeman, Tony
2003 - 2009	Graham, Alex	Montgomery, Andrea	Ludeman, Tony
2010	Shields, Jenny	Chaplin, Sarah	Ludeman, Tony
2011 - 2013	Shields, Peter	Chaplin, Sarah	Young, Tim
2014 - 2023	Shields, Peter	Hall, Suzie	Young, Tim

Current Life Members - Margaret Feldtmann, Neil Sutherland, Una Feldtmann

Previous Life Members - Tom Ryan, James Cummins, Fred Petschack, Jack Harker, Tom Harrington, Max Feldtmann, Albert Donnan, Barbara Philp, Marie Tracey

GLAZING & PROPERTY
Maintenance
P.G. SHIELDS
 Mobile
0419 317 671

GENERAL WELDING, FABRICATION & REPAIR

Feldtmann Fabrication and Repair offers you an outstanding quality of service for all your General Welding, Fabrication and Repair needs in Mild Steel, Stainless Steel and Aluminium. Supplying a mobile onsite service, we can also come to you.

- STAIRS, HANDRAILS AND ACCESS RAMPS, SIGN POSTS & BOLLARDS
- DOMESTIC & COMMERCIAL GATES AND GRATES, STEEL FRAME DECKS
- AGRICULTURAL MACHINERY MODIFICATIONS AND REPAIRS
- STOCK LOADING RAMPS
- ALUMINIUM BOAT REPAIRS AND ALTERATIONS
- TRUCK AND UTE TRAYS
- DESIGN AND CONSULTATION
- ON SITE WELDING AND INSTALLATION
- REPAIRS AND MAINTENANCE

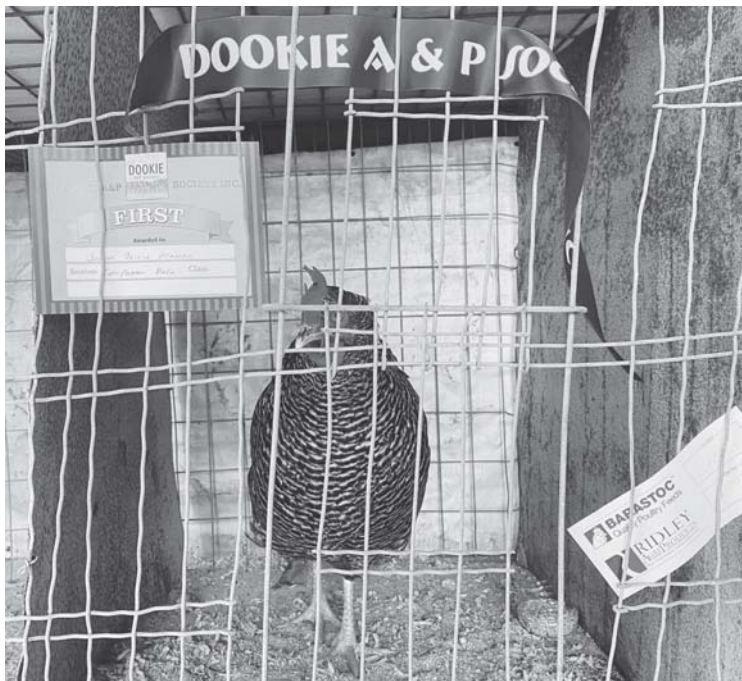
Contact Tim on:

Phone: 0402 233 369

Email: feldtmannfr@gmail.com



FELDTMANN
FABRICATION & REPAIR



BERTOLIS

AGRICULTURAL & INDUSTRIAL



BERENDS



MASSEY FERGUSON

FENDT

McHale



DUNCAN AG

Built to work.



Kubota

KRONE

198 - 200 Numurkah Road Shepparton Victoria 3630

PO Box 7077 Shepparton Victoria 3632

Phone **03 5821 3299** Fax 03 5831 1728

Jack: 0408 351 519 Paul: 0428 575 049

Email admin@bertolis.com.au www.bertolis.com.au

• *Quality* • *Service* • *Value for Money*

WE HAVE THE VEHICLE YOU NEED

KEN MUSTON AUTOMOTIVE

UTE • 4X4 • SUV • PERFORMANCE • SMALL • FAMILY • TOWING

MG ZS RANGE CLAIMS DRIVE BEST OVERALL VALUE CAR OF THE YEAR AWARD FOR 2021

Ken Muston MG 



EXPLORE JEEP



CHEROKEE L

COMPASS

WRANGLER

GLADIATOR

We have a range of vehicles in stock, ready for immediate delivery

I'm in.

UNLOCK YOUR ADVENTURE



**ISUZU
UTE**

Go wherever adventure takes you with the power, performance and reliability of the D-MAX ute or 7-seat MU-X SUV

RAM 1500 RANGE



RAM



For an unrivalled full-size pickup truck, the 1500 range. Eats More than just Utes!



**ISUZU
UTE**

Jeep



Ken Muston MG



RAM



Mercedes-Benz

**KEN MUSTON
AUTOMOTIVE**

205 - 215 Benalla Road Shepparton

www.kenmuston.com.au

(03) 5821 6688